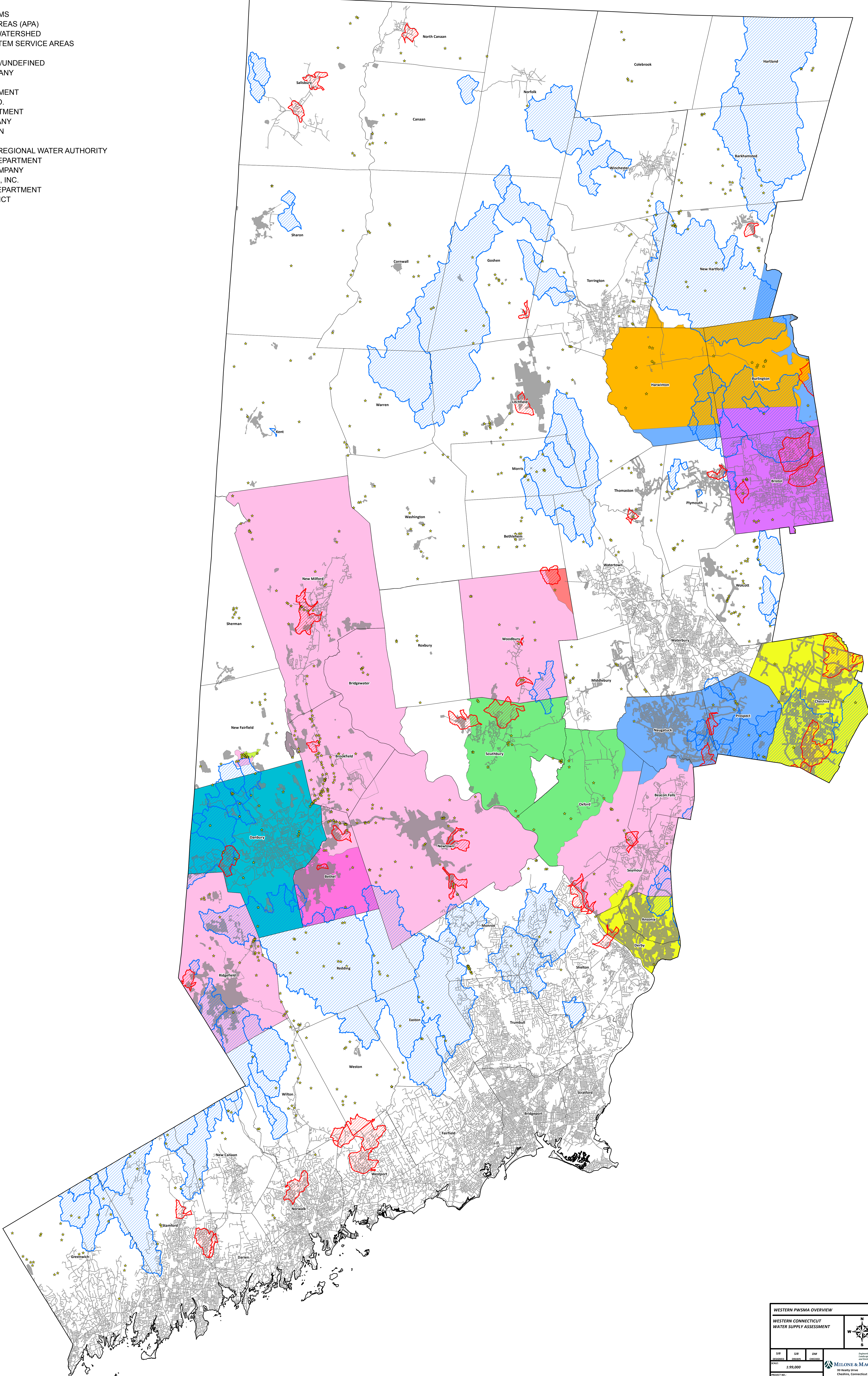


- LEGEND**
- * NON-COMMUNITY SYSTEMS
 - AQUIFER PROTECTION AREAS (APA)
 - PUBLIC WATER SUPPLY WATERSHED
 - COMMUNITY WATER SYSTEM SERVICE AREAS
 - EXCLUSIVE SERVICE AREA**
 - EXCLUSIVE UNASSIGNED/UNDEFINED
 - AQUARION WATER COMPANY
 - BETHEL WATER DEPT
 - BRISTOL WATER DEPARTMENT
 - CONNECTICUT WATER CO.
 - DANBURY WATER DEPARTMENT
 - HERITAGE WATER COMPANY
 - MERIDEN WATER DIVISION
 - NEW FAIRFIELD WPCA
 - SOUTH CENTRAL CONN. REGIONAL WATER AUTHORITY
 - SOUTHTON WATER DEPARTMENT
 - TORRINGTON WATER COMPANY
 - VALLEY WATER SYSTEMS, INC.
 - WALLINGFORD WATER DEPARTMENT
 - WATERTOWN FIRE DISTRICT



WESTERN PWSMA OVERVIEW				COUNTY: CT DPH, CT DEEP	
WESTERN CONNECTICUT WATER SUPPLY ASSESSMENT					
DATE:	SCALE:	PROJECT NO.:	DATE:	DATE:	
10/23/2016	1:99,000	1027-02-02	10/23/2016	10/23/2016	
			99 Healy Drive Cheshire, Connecticut 06034 (860) 371-1773 Fax: (860) 371-9393 www.miloneandmacbroom.com		
				APPENDED FIGURE 2	