

# Public Water System, Certified Water Operators and Local Health Directors

## Drought Resilience & Water Conservation

### DRINKING WATER SECTION

Lori Mathieu

Environmental Health & Drinking Water Branch Chief

October 15, 2020

(at 1:00 PM)

CONNECTICUT DEPARTMENT *of* PUBLIC HEALTH



# AGENDA



DRINKING WATER  
SECTION

WEBINAR

Water Utilities

Certified Water  
Operators

Local Health

October 15, 2020

DPH

Connecticut Department  
of Public Health



- **Drought Update**
- **Interagency Drought Workgroup (PRs) and the role of Municipal Water Coordinators**
- **Response Action by CWSs (CLs 2020-54 & 73)**
- **Impact on Private Wells & Resources**
- **Water Quality Concerns**
- **Updates from CWSs on Drought Action**

Drought Resilience & Water Conservation

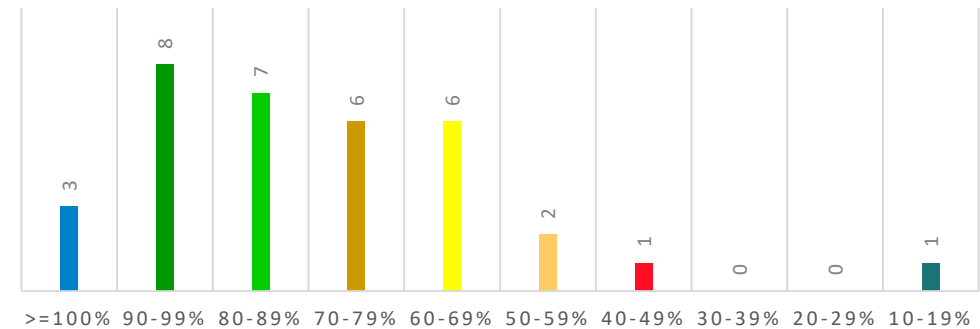


# Tracking per State Drought Plan

❖ Statewide Percent full is 63.9% ❖ Statewide Percent of Normal is 79.5%

- 3 Reservoir Systems  $\geq 100\%$  of Normal
- 31 Reservoir Systems are below normal capacities
- 5 CWS are in 3<sup>rd</sup> Stage of their drought plans
  - Norwalk 1<sup>st</sup> Tax District – Emergency/Drought Watch
  - UCONN Main Campus – Water Supply Warning
  - Bristol – Emergency Phase 1
  - Manchester – Emergency Phase 1
  - AWC Greenwich – Drought Warning

OCCURENCE OF CWS RESERVOIR CAPACITIES PER RANGE OF PERCENT OF NORMAL



- 2 CWS are in 2<sup>nd</sup> Stage of their drought plans
  - New Britain – Drought Watch
  - SNEW – Drought Watch

- 6 CWS are in 1<sup>st</sup> Stage
  - Norwich – Water Supply Advisory
  - CTWC Guilford – Drought Advisory
  - CTWC Stafford – Drought Advisory
  - New London – Drought Advisory

October 15, 2020







# Reservoir System Drought Restrictions

DRINKING WATER SECTION

WEBINAR

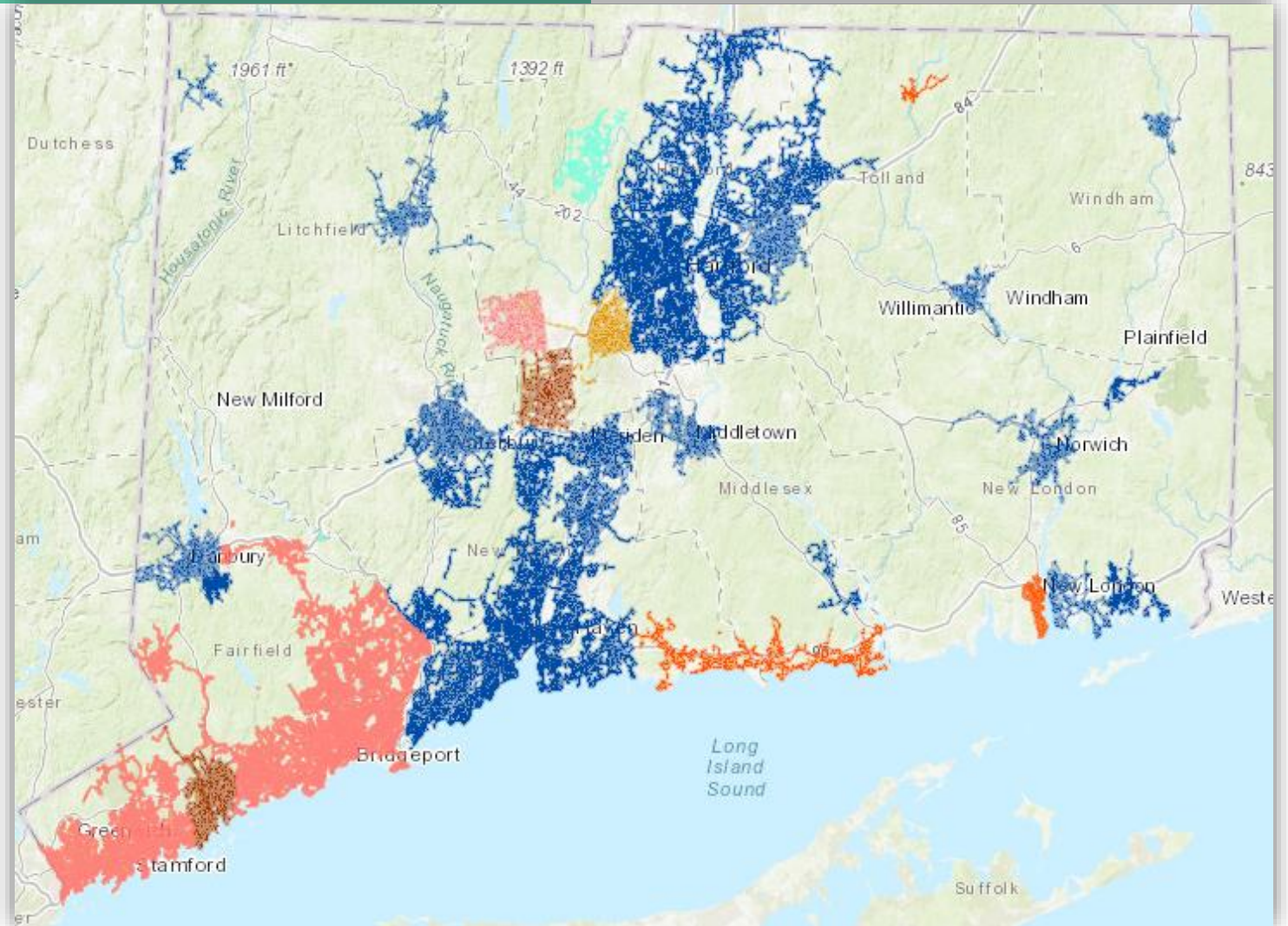
Water Utilities

Certified Water Operators

Local Health

October 15, 2020

-  No Restrictions
-  20% reduce in water usage. Mandatory 2day/week wat
-  Voluntary Restriction- Reduce irrigation
-  NA
-  Voluntary Conservation request
-  Mandatory 2day/week watering until end of October
-  Mandatory odd/even watering, limit outside water u
-  Voluntary Restrictions
-  Voluntary 10% reduction, Odd/Even Watering
-  Voluntary 10% reduction
-  Mandatory Conservation request



Drought Resilience & Water Conservation







# Drought Update

DRINKING WATER SECTION

WEBINAR

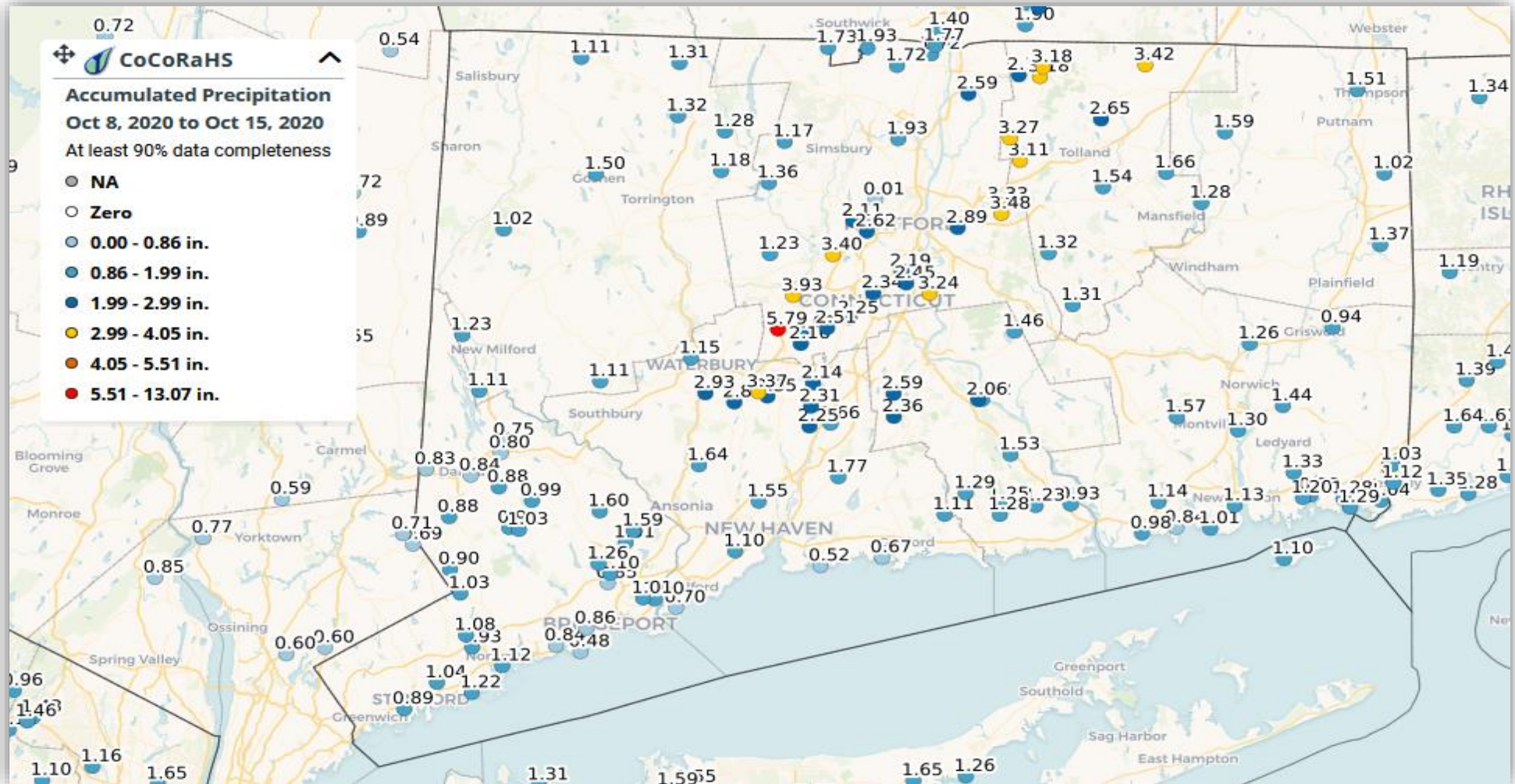
Water Utilities

Certified Water Operators

Local Health

October 15, 2020

### Precipitation from 10/8 to 10/15



Drought Resilience & Water Conservation





DRINKING WATER SECTION

WEBINAR

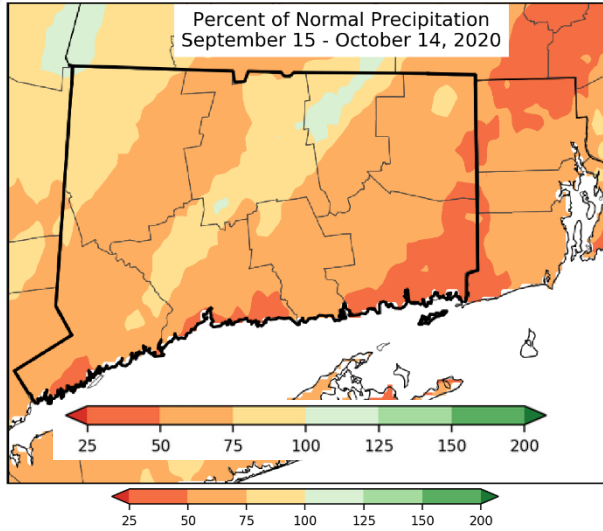
Water Utilities

Certified Water Operators

Local Health

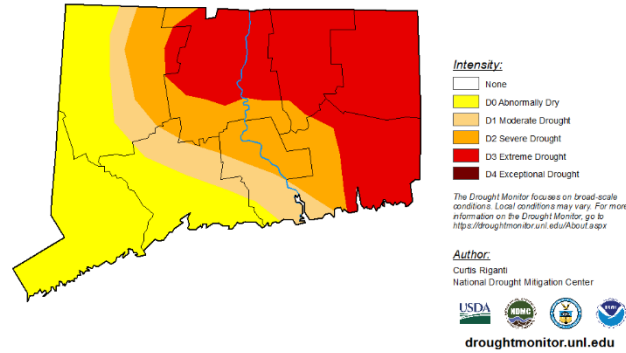
# Drought Monitor Update

## US Drought Monitor: No change since last week!

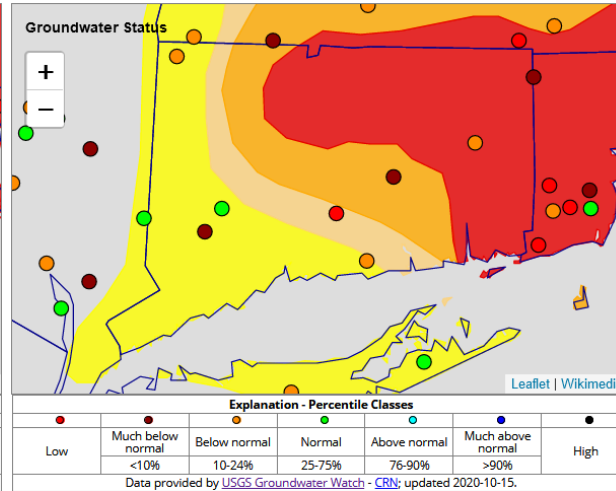
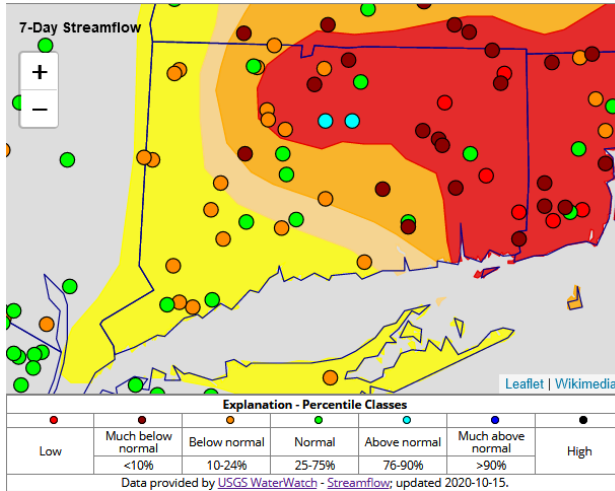
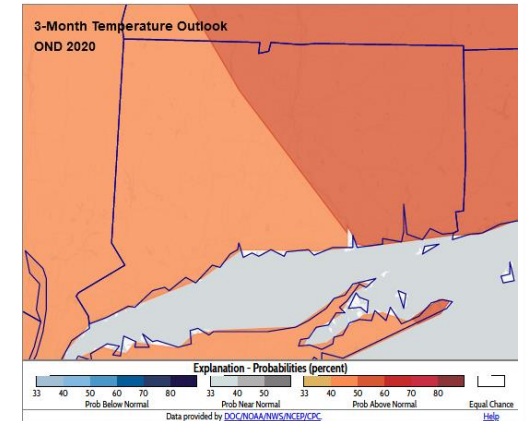
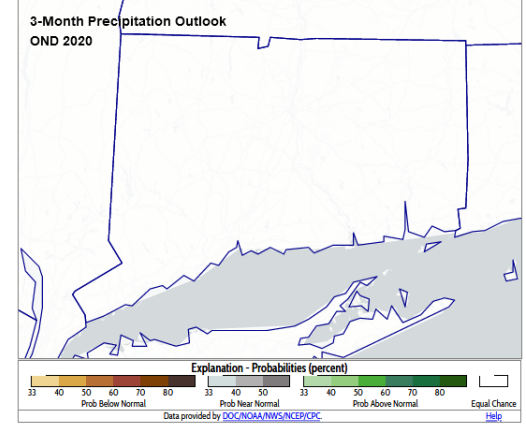


### U.S. Drought Monitor Connecticut

October 13, 2020  
(Released Thursday, Oct. 15, 2020)  
Valid 8 a.m. EDT



## 3-Month Precipitation and Temperature Outlook



Drought Resilience & Water Conservation

October 15, 2020





DRINKING WATER  
SECTION

WEBINAR

Water Utilities

Certified Water  
Operators

Local Health

October 15, 2020



# Interagency Drought Workgroup (IDW)

- IDW consist of DPH, DEEP, DESPP, OPM, DoAG, PURA
- Issued PRs on 8/26; 9/21; 10/05

<https://portal.ct.gov/-/media/Water/Drought/2020/IDW-Press-10520.pdf>

- Tasked with the implementation of State Drought Plan
- Towns to assign a municipal water coordinator to: coordinate all messages, implement local water ordinance, reporting local conditions.
- Drought Webpage: <https://portal.ct.gov/Water/Drought/Drought-Home>





# Action Measures by CWSs & Operators

- **Weekly monitoring/reporting of reservoir & groundwater levels- >1000 CWSs**
- **Notify DPH when you reach any drought trigger**
- **Weekly reading of instantaneous rate & quantity delivered and report if 20% different from prior week-<1000 CWSs**
- **If bulk water delivery is needed, use a licensed hauler and notify DPH – See CL [2020-60](#)**
- **If water filling station is needed to assist private well owners in the town you serve- See CL [2020-59](#)**
- **Fix leaks and reduce non-revenue water**





# Action Measures by CWSs & Operators

- **Ask customers to conserve and to follow these recommendations:**
  - **Turn off lawn irrigation systems**
  - **Curtail all outdoor water use**
  - **Run dishwashers & washers with full loads**
  - **Do not leave water running unnecessarily when brushing teeth, showering or washing hands**
  - **Fix leaky faucets or toilets**



# Private Wells & Drought

**Tracking:** All Connecticut Local Health Departments have been asked to provide weekly reports of the number of new well permits issued for replacement, deepening or hydrofracturing of private wells for each of their municipalities, in **Circular Letter: 2020-53**.

✓ The DPH Private Well Program has been tracking this information since July, 2020.

**Important to Note, Bulk Water Hauling:** Connecticut General Statute (CGS) 19a-37(k) was recently updated. Any water transported in bulk by any means to a premises supplied by a private well or well for semipublic use for drinking or domestic purposes shall be provided by a bulk water hauler licensed pursuant to section CGS 20-278h.

**See CL 2020-60 for bulk water hauling; and for temporary filling station see CL 2020-59**

**Relevant Resources are Available on the DPH, Private Well Program Website:**

[www.ct.gov/dph/privatewells](http://www.ct.gov/dph/privatewells)

Publication: [Guidelines for Private Well Users in Times of Drought or Low Precipitation](#)

*(Under, publications and fact sheets)*

DPH Private Well Program Contact:

[DPH.PrivateWellProgram@ct.gov](mailto:DPH.PrivateWellProgram@ct.gov) (860) 509-8401

## PRIVATE WELL WATER IN CONNECTICUT

Publication Date: November 2016

### Publication No. 36: Guidelines for Private Well Users in times of Drought or Low Precipitation

Some private wells run dry or experience low water quantity every year, while others, which may be right next-door, flow without a problem even during a drought. Geographical or physical conditions of the soil or rock and well construction may cause these differences.

Groundwater levels all across Connecticut may drop due to a lack of precipitation. This can happen anytime of the year but is more likely to be most severe during greater water consumption periods in the spring, summer and fall. Typically, dug wells and point wells are more likely to go dry because of their shallow construction and are less reliable than deeper drilled wells constructed into bedrock.

#### How Do I Know if I Have a Problem?

Indicators that your well water supply is having trouble keeping up with demand for water in your house may include:

- If your well pump turns on more frequently than normal. You are more likely to realize this is happening if your well pump is not located deep inside the well. Some well pumps are located in a crawl space or basement.
- If you notice frequent fluctuation of the pressure gauge on your storage tank. This is possibly indicating short cycling of a submersible pump located deep inside your well.
- If you are experiencing water surges or a complete loss of water from your taps.
- If you experience a drop in water pressure.
- If the water quality becomes cloudy, turbid, or silty.



#### About My Well

Where is it? How deep is it? These are some basic questions and having the answers ahead of time can be helpful when trying to troubleshoot any issues with your well water system. If you do not know the answers, refer to [EHS Circular Letter 2014-27, Well Completion Reports](#) for information on how to locate your well by getting a copy of the well completion report. A well completion report should have general information you need to become more familiar with your well's location and construction.

If you are unable to locate a well completion report, you may be able to find a copy at your Local Health Department or with the well driller. Wells constructed in the last 30 to 40 years should also be visible above grade where you will see a steel well casing with a well cap. Wells constructed prior to this general time-frame were often buried below grade or buried within well pits. Well pits typically were constructed



# Water Quality Concerns

- **Cyanobacteria Bloom – Consider monitoring to ensure toxins will not enter the distribution system – See CLs 2016-24 and 2015-07**
- **Lead – Changing sources and activating interconnection may affect the corrosivity potential and cause elevated lead at taps.**





DRINKING WATER SECTION

WEBINAR

Water Utilities

Certified Water Operators

Local Health

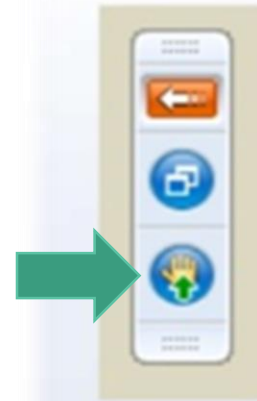
October 15, 2020

# UPDATES

- CTWC
- Aquarion
- RWA
- MDC
- Others (Torrington, Bristol, etc..)

### Requesting to raise your hand from GotoWebinar Control Panel

#### Grab Tab



- Click **arrow** to expand and collapse control panel
- Click **hand icon** to raise/lower hand

Drought Resilience & Water Conservation



# Suggestions



DRINKING WATER  
SECTION

WEBINAR

Water Utilities

Certified Water  
Operators

Local Health

October 15, 2020



- Email questions/notifications to [dwdcompliance@ct.gov](mailto:dwdcompliance@ct.gov)
- Emergency notifications, may call 860-692-2333, and email to [dwdcompliance@ct.gov](mailto:dwdcompliance@ct.gov)
- **DPH Private Well Program Contact:**  
Email: [DPH.PrivateWellProgram@ct.gov](mailto:DPH.PrivateWellProgram@ct.gov) Phone: (860) 509-8401

# Public Water System, Certified Water Operators and Local Health Directors

# Thank You

## DRINKING WATER SECTION



CONNECTICUT DEPARTMENT *of* PUBLIC HEALTH

