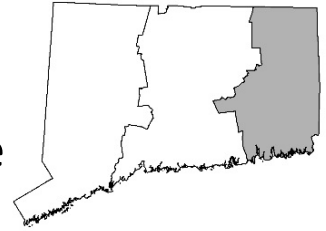


Eastern Region Water Utility Coordinating Committee



December 16, 2016

Via Electronic Mail To:

Eastern WUCC Members
Municipalities Where ESAs May Be Declared (see list below)
Interested Parties

Robert Congdon, Tri-Chair
congdon@preston-ct.org
860-887-5581 Ext.105

Mark Decker, Tri-Chair
MarkDecker@npumail.com
860-823-4168

Patrick Bernardo, Tri-Chair
Patrick.bernardo@suez-na.com
856-718-7003

Samuel Alexander,
Recording Secretary
SAlexander@seccog.org
860-889-2324

And Via Regular Mail to the Following Municipalities:

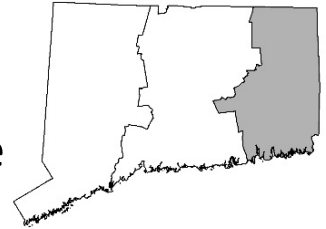
The Honorable Michael J. Zambo, First Selectman, Town of Ashford
The Honorable Richard A. Ives, First Selectman, Town of Brooklyn
The Honorable Roy A. Piper, First Selectman, Town of Canterbury
The Honorable Matthew Cunningham, First Selectman, Town of Chaplin
The Honorable Arthur Brodeur, First Selectman, Town of Eastford
The Honorable Allen R. Cahill, First Selectman, Town of Hampton
Sean Hendricks, Town Manager, Town of Killingly
The Honorable Paul E. Sweet, First Selectman, Town of Plainfield
The Honorable Craig Baldwin, First Selectman, Town of Pomfret
The Honorable Anthony Falzarano, Mayor, Town of Putnam
The Honorable Daniel D. Syme, First Selectman, Town of Scotland
The Honorable Russell M. Gray, First Selectman, Town of Sterling
The Honorable Kenneth Beausoleil, First Selectman, Town of Thompson
The Honorable Albert L. Goodhall, Jr., First Selectman, Town of Union
Neal Beets, Town Manager, Town of Windham
The Honorable Allen D. Walker, Jr., First Selectman, Town of Woodstock

RE: Current Exclusive Service Area Declarations and Opportunity for Comment

As you are aware, the Eastern Water Utility Coordinating Committee (WUCC) is in the process of establishing Exclusive Service Area (ESA) boundaries for the northern portion of the Eastern Public Water Supply Management Area (PWSMA) where ESA boundaries have not yet been delineated. This includes all areas currently unserved by public water systems in the municipalities of Ashford, Brooklyn, Canterbury, Chaplin, Eastford, Hampton, Killingly, Plainfield, Pomfret, Putnam, Scotland, Sterling, Thompson, Union, Windham, and Woodstock. In general, the ESA holder will be responsible for owning and operating any new public water systems that may be necessary in the area.

A public water system is any system which serves more than 25 people or has more than 15 service connections and is regulated by the Connecticut Department of Public Health. As a reminder, all but three of the 16 municipalities listed above (Brooklyn, Plainfield, and Thompson) own and operate public water systems – even smaller municipalities typically operate small public water systems for schools and other municipal buildings. As part of the ESA process, existing public water systems will automatically receive ESA boundaries associated with the area that is currently served by those systems. A declaration process has begun to establish ESAs in areas that are currently unserved by public water systems.

Eastern Region Water Utility Coordinating Committee



An ESA Declaration Form was released in October 2016 for those water utilities and municipalities interested in becoming ESA holders for areas currently unserved by public water supply in the 16 municipalities identified above. Please refer to the attached Figures and Table 1 depicting the current claims received to date. Some municipalities continue to evaluate making a declaration. **Please be advised that the deadline for submission of ESA declaration forms is January 11, 2017 at the next meeting of the Eastern WUCC.** No ESA declarations will be accepted after that meeting.

The Eastern WUCC requests comment on the declarations to date before or at the next Eastern WUCC meeting scheduled for January 11, 2017 at the Northeastern Connecticut Council of Governments, 125 Putnam Pike, Dayville, CT 06241 from 1:00 pm to 3:00 pm. Please provide comments via email to the WUCC Tri-Chairs or by regular mail to the Eastern WUCC at the address at the bottom of this letter. **Formal conflict resolution for any remaining conflicts will begin at the January 11th meeting, following the schedule shown as Table 2 attached to this letter.** Parties still in conflict regarding ESA claims are requested to come to the January 11th meeting prepared to make a 15-minute presentation regarding their claim, or to provide an update on how the claim has been resolved to the mutual satisfaction of both parties.

The actual ESA boundaries eventually approved for a particular declarant may not include an entire community and each declaration will be discussed and/or negotiated as the process moves forward. The Eastern WUCC encourages municipalities and water utilities to discuss potential service needs, and for declarants with conflicting ESA declarations to meet to resolve those conflicts by January 11, 2017.

Please be advised that the assignment of an ESA in areas of a community currently unserved by public water supply does not necessarily mean that public water service is planned for that community. Provision of public water service will continue to be dependent upon local needs and conditions. The ESA holder is responsible for working with communities and developers interested in development or extension of public water systems.

If you have any questions, please do not hesitate to contact the WUCC officers or our consultant, Mr. Scott Bighinatti of Milone & MacBroom, Inc., at 203-271-1773 or sbighinatti@mminc.com. For current information regarding the WUCC process, please visit the DPH website at <http://www.ct.gov/dph/wucc>.

Very Truly Yours,

Handwritten signature of Robert Congdon in black ink.

Robert Congdon
Eastern Region WUCC Tri-Chair

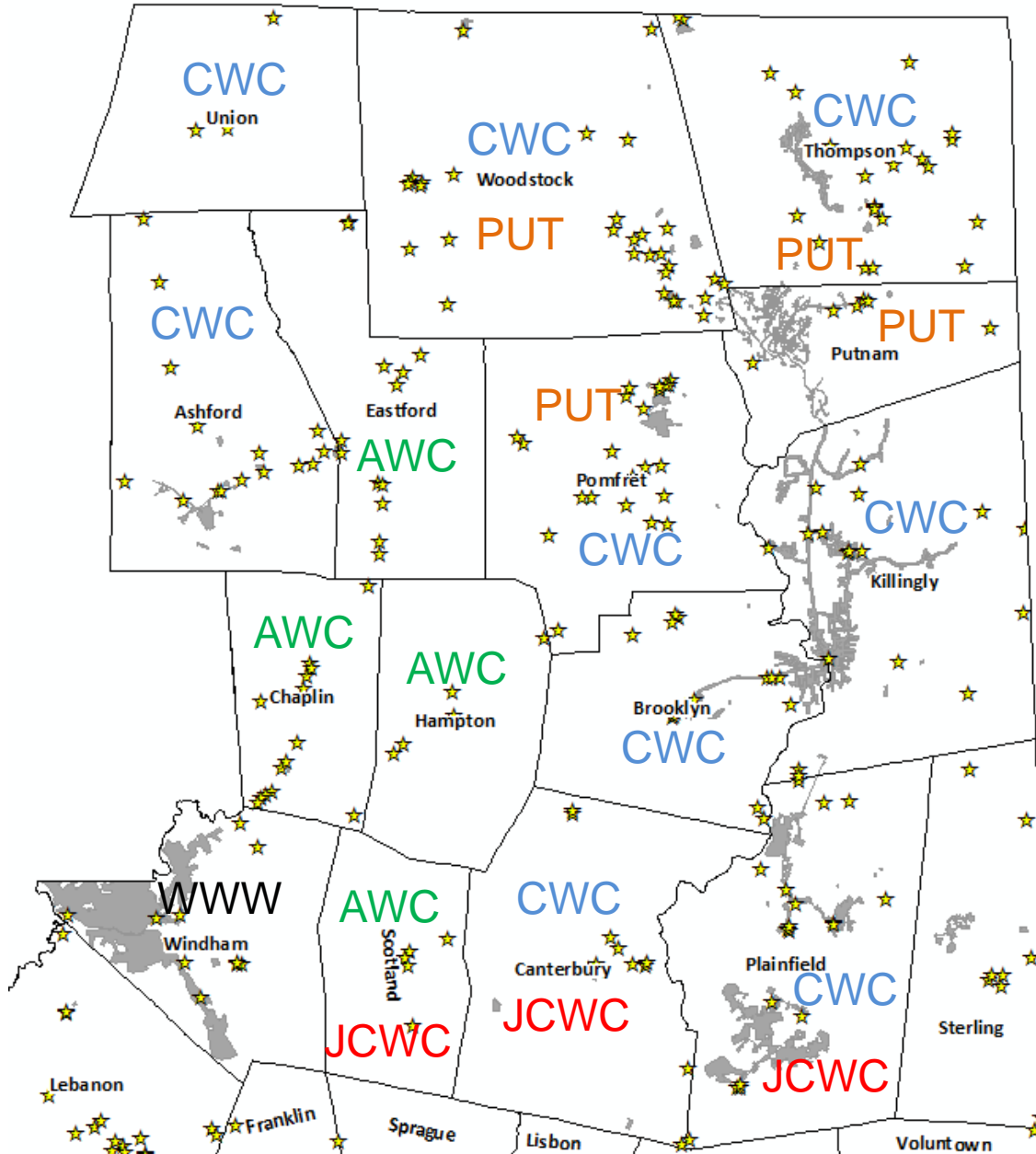
Handwritten signature of Mark Decker in black ink.

Mark Decker
Eastern Region WUCC Tri-Chair

Handwritten signature of Patrick Bernardo in black ink.

Patrick Bernardo
Eastern WUCC Tri-Chair

ESA Declarations by Utilities to Date (General)



- Aquarion (AWC), CT Water (CWC), Jewett City (JCWC), Putnam WPCA (PUT) and Windham Water Works (WWW) have declared for unserved areas in entire municipalities (Negotiable)
- Currently conflicted areas (not including DEEP) include Canterbury, Plainfield, Pomfret, Scotland, Thompson, and Woodstock
- No declarants for Sterling at present. Sterling WPCA cannot submit until submission approved by the Utility Commission

ESA Declarations by DEEP to Date (General)



- DEEP has declared for all State Lands (potential conflicts with water utilities)

DEEP Proposed Exclusive Service Areas

Legend	
	State Forest
	State Park
	State Park Scenic Reserve
	State Park Trail
	Natural Area Preserve
	Historic Preserve
	Wildlife Area
	Wildlife Sanctuary
	DEP Owned Waterbody
	Water Access
	Flood Control
	Fish Hatchery
	Other
	WUCC Boundary
	Exclusive Assigned
	Exclusive Unassigned
	Exclusive Undefined

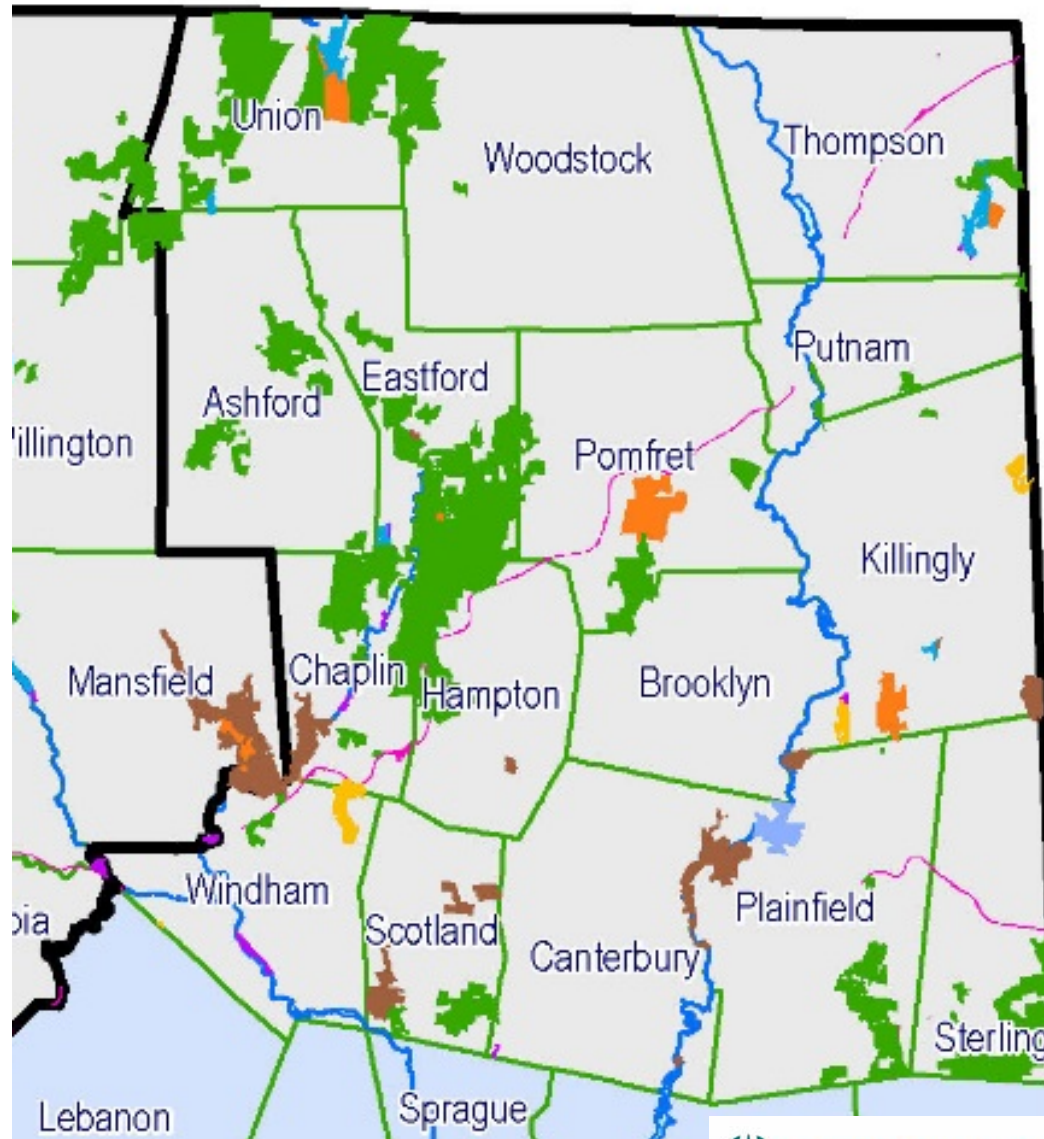


Table 1.
Eastern WUCC ESA Declaration Summary for Correspondence Received by End of Day, 12/15/16

Municipality	CT DEEP ESA Declared	ESA Declarant 2*	ESA Declarant 3*	Conflict(s) or Coordination Needed
Ashford	Yes (properties throughout)	Connecticut Water Company		Yes
Brooklyn	Yes (northwest properties)	Connecticut Water Company		Yes
Canterbury	Yes (properties throughout)	Connecticut Water Company	Jewett City Water Company	Yes
Chaplin	Yes (properties throughout and trail)	Aquarion Water Company		Yes
Eastford	Yes (most of west and southern part of town)	Aquarion Water Company		Yes
Hampton	Yes (northwest properties and trail)	Aquarion Water Company		Yes
Killingly	Yes (properties throughout near boundaries)	Connecticut Water Company		Yes
Plainfield	Yes (properties throughout and trail)	Connecticut Water Company	Jewett City Water Company	Yes
Pomfret	Yes (south central and eastern properties)	Connecticut Water Company	Putnam WPCA	Yes
Putnam	Yes (southern properties, western trail)	Putnam WPCA		Yes
Scotland	Yes (properties throughout)	Jewett City Water Company	Aquarion Water Company (possibly rescinding)	Yes
Sterling	Yes (central trail and southern properties)	Possibly Town of Sterling (commission meeting 12/21/16)		Maybe
Thompson	Yes (eastern properties, trail)	Connecticut Water Company	Putnam WPCA	Yes
Union	Yes (properties throughout)	Connecticut Water Company		Yes
Windham	Yes (northern properties and those on Shetucket River and trail)	Windham Water Works (all unserved areas except areas claimed by DEEP)		No
Woodstock	Yes (northwestern properties)	Connecticut Water Company	Putnam WPCA	Yes

*In general, declarants other than DEEP declared for all areas currently unserved by public water systems in an entire municipality except as noted.

Table 2.
Presentation order for Formal Conflict Resolution Procedures
Beginning January 11th, 2017

1. Municipalities where Connecticut Water Company is in conflict with only Connecticut DEEP
 - a. Ashford
 - b. Brooklyn
 - c. Canterbury
 - d. Killingly
 - e. Union

2. Municipalities where Aquarion Water Company is in conflict with only Connecticut DEEP
 - a. Chaplin
 - b. Eastford
 - c. Hampton

3. Municipalities where Putnam WPCA is in conflict with only Connecticut DEEP
 - a. Putnam

4. Municipalities where Connecticut Water Company, Jewett City Water Company, and Connecticut DEEP are in conflict
 - a. Plainfield

5. Municipalities where Connecticut Water Company, Putnam WPCA, and Connecticut DEEP are in conflict
 - a. Pomfret
 - b. Thompson
 - c. Woodstock

6. Municipalities where Jewett City Water Company, Aquarion Water Company, and Connecticut DEEP are in conflict
 - a. Scotland

7. Municipalities where potential conflicts may exist between Connecticut DEEP and others.
 - a. Sterling

If additional declarants are realized, the presentation order will be amended. For example, if an additional declarant was realized in Pomfret before January 11th, the municipality of Pomfret would be removed from consideration under presentation #5 and added to the order as Presentation #8.