



State of Connecticut
Department of Administrative Services
Division of Construction Services
Office of Education and Data Management

*Office of Education and Data Management
Fall 2016 Career Development Series*

2016 State Fire Safety Code Updates: Administration and Part IV

Presented by
Joe Kingston, Supervisor, Office of State Fire Marshal

State Fire Safety Code Updates

Connecticut State Fire Safety Code
Effective = October 1, 2016

Cover today:
Statute Updates
Significant Changes Parts I, II and IV

CGS Statute Updates

- §29-251 / PA 13-146
 - Increased membership of Codes & Standards to 21
 - Added trades - Electrical, Plumbers/Pipefitters, HVAC
- §29-298 / PA 16-157 (7/1/16)
 - 1) Minor wording changes: fire code inspector; fire investigator
 - (d) added 'citation' to list the LFM may authorize, in writing, any deputy, inspector
- §29-298 / PA 14-137 Everyone now certified as a Fire Marshal
 - Hierarchy in your office is your chain of command

Statute Updates

- PA 16-215 / new CGS# (3/31/16)
 - Effects:
 - State Fire Safety Code
 - State Building Code
 - State Fire Prevention Code
 - Section 3 – SFM and C&S
 - State Fire Safety Code – change in, addition to, or repeal
 - Required to comply with CGS Chap. 54 (Administrative Procedures Act)
 - Except as noted

Statute Update PA 16-215

- Prior to adoption or any amendments there-to:
 - Post proposed code, statement of purpose, fiscal note, regulatory flexibility analysis on DAS website.
 - Notice to CGA Public Safety Committee
 - Provide for a period of public comment (45 days: 6/25-8/5)
 - Hold a public hearing (7/13)
 - Respond to public comment & post on DAS website
 - CGA regulation review committee 45 days (8/11-9/25) to convene meeting to:
 - Approve
 - Disapprove
 - Reject w/o prejudice
 - Choose not to act; it is Approved
 - Meeting set for Sept 27, 2016
 - Effective upon posting on DAS website ===== Posted NOW Effective 10/1/2016
 - Posted code is 'official version'

Bottom Line

- No longer a 'Regulation of a Connecticut State Agency'
 - Not proceeded by §29-292, etc.
 - I.E **NO** 29-292-13e, etc.
- It is a **CODE** and to be cited as such!
- Other sections of PA-215 affect:
 - Building Code (same timeline as fire code)
 - Fire Prevention Code (next time up) for now is still a RSA



Other Statutes of Relevance

- PA 16-2 / §29-109, 111-113, 115, 117, 120, 127, 128b.
 - Repealed most of the motion picture statutes. (certificates/licenses, etc.)
 - Still inspect (LFM) as an A1 occupancy - Annually
- PA 16-55 DMV
 - New form addressing dealer or MV repair (form K-7)
 - FM & BO signature spots
 - Follow Directive 7
- Lastly: Letter from Bill to all town clerks w/ copy to FM
 - Dated June 21, 2016
 - Letter of appointments to SFM for FM's only (CGS §29-297)

History of the State Fire Safety Code



1947 – CT Fire Safety Code

Published in 7 progressive installments from 1947 to 1955

1956 – CT Fire Safety Code

Compiled the 7 installments into one code as of Jan 1, 1956

1971 – State Fire Safety Code

- First update of the code in 15 years effective Sept. 30, 1971
- Public Act 801

History of the State Fire Safety Code



[He who transplanted still sustains.]
CONNECTICUT.

1981 – CT Fire Safety Code (Little Blue Book)

Update of the code effective September 1, 1981
Plagiarized 1976 edition NFPA 101

1987 – CT Fire Safety Code

First Fire Safety Code to adopt a Nationally Recognized Standard with amendments
Adopts 1985 edition of NFPA 101 (amended)

1989 – CT Fire Safety Code

Adopts 1988 edition of NFPA 101 (amended)

9

History of the State Fire Safety Code



[He who transplanted still sustains.]
CONNECTICUT.

1994 – CT Fire Safety Code

Adopts 1991 edition of NFPA 101 (amended)
Errata and Revisions Issued April 25, 1997

1999 – CT Fire Safety Code

Adopts 1997 edition of NFPA 101 (amended)

10

History of the State Fire Safety Code



[He who transplanted still sustains.]

CONNECTICUT.

2005 – Connecticut Fire Safety Code

Effective December 31, 2005

2 amendments: August 1, 2009 & October 2, 2012

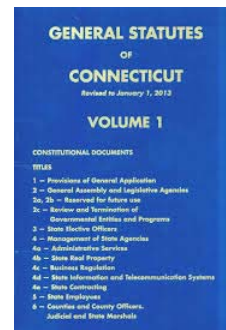
Included 5 parts:

- I. Administrative
- II. General
- III. New Buildings (2003 IFC as amended)
- IV. Existing Buildings (2003 NFPA 101 as amended)
- ~~V. Maintenance and Operational Issues (2003 NFPA 1 as amended)~~

11

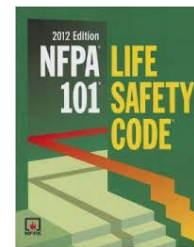
Enabling Statute

- CGS §29-292 -- Same as always some minor changes by PA 16-215 section 7
 - State FM &and C&S
 - In accordance with section 3 of this act
 - Adopt and administer and may at any time amend
 - Based on a nationally recognized model code



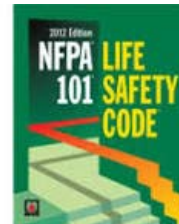
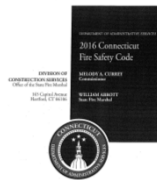
The Connecticut Fire Safety Code

- The 2016 CT Document
 - Connecticut Document
 - The IFC 2012 edition
 - NFPA 101 2012 edition w/ TIA 12-2
 - Applicable referenced standards



Layout of the Code

- Part I – Administrative
 - Sections 100 to 111 (no 101)
- Part II – General
 - Sections 201 and 202
- Part III – New Construction, Renovations, or Change of Use and New Buildings.
 - Amendments to the 2012 International Fire Code (IFC)
- Part IV – Existing Buildings / Occupancies
 - Amendments to the 2012 NFPA 101, Life Safety Code.



Part I - Administrative

Section 100	Title and Applicability
Section 102	Adopted Standards
Section 103	Authority Having Jurisdiction
Section 104	Plan Submittal & Review
Section 105	Building Permit Approval
Section 106	Variations or Exemptions
Section 107	Inspections
Section 108	Acceptance of Building Official Reports
Section 109	Certificate of Occupancy Approval
Section 110	Application
Section 111	Changes of Occupancy or Use

Part I Essentially the same information as current code but different layout.

2016 Code		2005 Code
• Part I Section 100	→	• 29-292-1e
• Part I Section 102	→	• 29-292-16e & 29-292-20e
• Part I Section 103	→	• 29-292-3e
• Part I Section 104	→	• 29-292-4e
• Part I Section 105	→	• 29-292-5e
• Part I Section 106	→	• 29-292-6e
• Part I Section 107	→	• 29-292-7e
• Part I Section 108	→	• 29-292-8e
• Part I Section 109	→	• 29-292-9e
• Part I Section 110	→	• 29-292-10e
• Part I Section 111	→	• 29-292-11e

Part I Section 100.5 - Manufacturing

- Removed manufacturing from exemptions
 - Remember PA 09-35 deleted exception re. premises used for manufacturing from CGS §29-292.
 - 2005 CSFSC specifically said it did not apply to manufacturing.
- 2016 CSFSC has NO exemption for manufacturing
 - Existing – Chap 40
 - New – F1 or F2

Part I -- Tents

- Old §29-292-1e(c) Referenced Tent & Portable Shelter Code (§29-140)
 - Now a DCP Statute and Regulation (PA 11-51)
- 2016 CSFSC removed referenced to Tent & Portable Shelter Code
 - Requirements found in Part III Chapter 31
 - Temporary Tents and Membrane Structures (3103)
 - Temporary and Permanent Tents and Membrane Structures (3104)
 - Basic rule is now > 400 ft² - For Approval - There are exceptions!!
 - Temporary: 180 consecutive day maximum out of any consecutive 365 day period.
 - If over 180 consecutive days == Permanent
- Working with DCP to renovate their regulation

Part I -- Sections 100.5 & 100.6 IRC Buildings

BO defines if IRC based upon permit application, Generally:

Detached 1 & 2 family dwellings

Townhouses up to 3 stories above grade plane

Separate means of egress

Fire Resistive separation

Definition in IRC

And their accessory structures

Smoke alarms & CO detectors

Responsibility of BO

FM inspect per CGS §29-305 upon complaint or request of owner or occupant.

Only for smoke alarms

Power requirements based upon building permit date – Assessor records

Remember for 1 family homes smoke detection required BP on/after October 1, 1978

Part 1 Section 100.9 – Public Service Cos.

- This code shall not apply to the installation, alteration or repair of generation, distribution, metering or other related equipment that is under the ownership and control of public utility companies defined under CGS §16-1.
 - CGS §16.1 - (3) “Public service company” includes electric distribution, gas, telephone, pipeline, sewage, water and community antenna television companies and holders of a certificate of cable franchise authority, owning, leasing, maintaining, operating, managing or controlling plants or parts of plants or equipment, but shall not include towns, cities, boroughs, any municipal corporation or department thereof, whether separately incorporated or not, a private power producer, as defined in section 16-243b, or an exempt wholesale generator, as defined in 15 USC 79z-5a;

Part I Section 103(b, c, d)

- LFM to make initial determination concerning compliance.
 - Exception – State owned properties
 - LFM decision may be appealed to OSFM Part I Section 103(b)
- LFM or SFM may be appealed to C&S
 - CGS 29-309

Part I Section 110 (a), (b), (c), (d) - Application

- a) Part I & II apply to all occupancies and uses located within a building or structure.
- b) Part III applies with a BP application made on or after effective date of this code.
 - New buildings, structures, or portions thereof
 - Buildings, structures, or portions thereof undergoing repairs, alterations and additions
 - Buildings, structures, or portions thereof undergoing a change of occupancy or use as specified in Part I section 111.
 - For existing occupancies subject to an abatement order for a violation of Part IV, only new fire protection, electrical, mechanical system work subject to Part III.

Part I Section 110 (a), (b), (c), (d) - Application

- c) **Part III** applies to buildings, structures, or portions thereof for which a **building permit was applied for on or after December 31, 2005**.
 - **Part III Section 101.1** – Where the provisions of Part III conflict with the building and fire safety codes that applied at the time of construction, the provisions of the codes that applied at the time of construction shall apply.

Part I Section 110 (a), (b), (c), (d) - Application

- d) **Part IV** applies to occupancies and uses and uses located within buildings and structures, or portions thereof **that existed prior to December 31, 2005**.

Part I Section 111 – Changes of Occupancy or Use

- Meet the requirement for new occupancy
 - Applies whether or not a physical alteration is done
 - Doesn't apply to change of tenant(s) or ownership where the use or occupancy remains the same.
- Different division within same occupancy group or different group of occupancies.
 - More hazardous
 - Two to a three family (R3/IRC to R2)
 - A3 to A2 (pool hall to a tavern)
 - M to A2 (store/mercantile to a restaurant)

Part II -- General

- 201 – Application
 - Applies to occupancies and uses and uses located within buildings or structure.
 - Requirement differs between code and standard – Code will apply.
 - Where the referenced standard contains subject matter that is addressed in the code; the provisions of the code prevail.
- 202 – Referenced Publications
 - Documents or portions thereof listed in:
 - IFC Chapter 80
 - NFPA 101 Chapter 2
 - As referenced by those codes
 - Except as amended by Part II Section 202
 - Considered part of the requirements of those codes to the extent called for by those codes.

Part II -- General

- Part IV
 - Section 2.2
 - Provide pointer to Part I Section 202
- Section 202.1 AMEND IFC publications
 - Add NFPA 2 – Hydrogen Technologies Code 2011
 - Add NFPA 54 – National Fuel Gas Code 2012 - NOT adopting IFCG
 - Add NFPA 56 – Fire & Explosion Prevention during Cleaning and Purging of Flammable Gas Piping Systems – 2014.

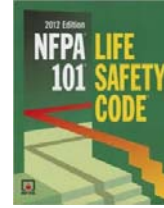
Part III

- October Career Development
- Significant Changes – Building Code and Part III
 - Terry Brouwer - Supervisor OSFM
 - Darren Hobbs - OSBI



Part IV -- Existing Buildings/Occupancies

- Jumping several editions of NFPA 101
 - Skipped 06, 09 editions
 - Had to review changes from 03-06, 06-09, 09-12
 - Many minor changes all over
 - New/Modified definitions in Chapter 3
- Tried to remove as much Inspection, Testing and Maintenance as possible.
 - Covered by Fire Prevention Code
- Adopted Standard – NFPA 101 2012 edition; with annexes and TIA 12-2 (fixed some items in existing healthcare)



Part IV -- Existing Buildings/Occupancies

- Kept existing Connecticut Amendments – Some Re-numbered
- Section 1.3.1 Application
 - Same wording as in Part I Section 110
 - Applies to occupancies/uses located within building or structures that existed PRIOR to December 31, 2005.
- Chapter 2 – Referenced Publications – Already Discussed
- Chapter 3 – Definitions
- Chapter 4 – General
- Chapter 5 Deleted – Performance Based Design
- Chapter 6 – Classification of Occupancy & Hazard of Contents
 - Added (should have also put in definitions but forgot)
 - In-Home Industrial Occupancy other than High Hazard

In-Home Industrial Occupancy (other than High Hazard)

- Same concept as in-home Business
 - In a single family dwelling
 - in which processing, assembling, mixing, packaging, decorating, or repair operations are conducted
 - Employ a maximum of 1 person in addition to the residents of the dwelling
 - Classified as a single family.
- Example: Silk screening in garage.

Part IV -- Existing Buildings/Occupancies

- 3.2.1 Approved
 - Acceptable to the AHJ.
- 3.3.212 Previously Approved
 - Acceptable to the AHJ prior to the date the code went into effect.
- 3.3.79.1 Approved Existing
 - That which is already in existence on the date this edition of the code goes into effect and is acceptable to the AHJ.

Part IV -- Existing Buildings/Occupancies

- General in XX.1.1.1.2 section – references back to Chapter 1 Administration
- General in XX.1.1.1.3 section – references back to Chapter 4 General
 - All of the above sections heavily amended by CT
- General in the XX.2.4.1 section – added clarification that CPT is permitted
- General in XX.2.4.1 section – references back to 7.4 for number of exits
- General in XX.2.4.X section – reference to arrangement for the exits
- General in X.X 1.4.1 Definitions – reference to Chapter 3

Part IV -- Existing Buildings/Occupancies

- Chapter 7 -- Many instances ‘...other than existing’
- 7.2.1.5 Locks, Latches, Alarm devices
 - Normal
 - Key
 - Electrically Controlled (electric door knob)
 - Handbook commentary equates an electrically locked door to a traditional mechanical lock.
 - Special
 - Delayed Egress
 - Access Controlled
 - Elevator Lobbies
- 7.2.1.5.2 - Recognized ‘fire pin’ in doors being subject to elevated temperatures



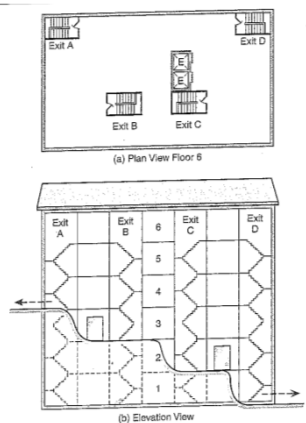
Part IV -- Existing Buildings/Occupancies

- 7.2.6.1.3 Elevator Lobby Exit Access Door Assembly Locking
 - Must be permitted by the Occupancy Chapter
 - Limited to electrical locking means
 - 14 Criteria
 - Sprinklers
 - Detection
 - Two way communication
 - Constantly attended control point



Part IV -- Existing Buildings/Occupancies

- Revised 7.7.2 Exit Discharge Through Interior Building Areas
 - Revised to permit exit discharge through interior building area on any floor, not just the LED.



Part IV -- Existing Buildings/Occupancies

- Revised 7.7.3.4 Stairs that go past LED >1/2 story.
 - From prescriptive (door, partition, or other effective means) TO
 - Performance – Approved means to prevent or dissuade.
 - Gate, Signage, Floor marking,
 - Effectively interrupts, forcing to perform a deliberate act.
 - Still says traveling past LED
 - If floor(s) below need as an exit - do not hinder them

Part IV -- Existing Buildings/Occupancies

- New section 7.13 – Normally Unoccupied Building Service Equipment Support Areas.
 - New definition 3.3.21.6
 - **Normally Unoccupied Building Service Equipment Support Area.** A building service equipment support area in which people are not expected to be present on a regular basis.
 - Space is vacant or intended exclusively for the routing of duct work, cables, conduit, piping, etc. and is RARELY accessed.
 - NOT spaces that are routinely visited for storage, maintenance, testing and inspection!
 - Storage or fuel fired equipment would not be expected to be permitted in these areas.
 - Significantly reduced the MOE features required for these areas.
 - Read Handbook Commentary



Part IV -- Existing Buildings/Occupancies

• 8.3.4.2 Table

- Fire Protection Ratings for Opening protectives
 - Kept old table that is not as extensive as in the 101 document.
 - Changes to marking on the glazing
 - Code still recognized ¼" wired glass in metal frame as 20 min.
 - Part III will address these markings



Part IV -- Existing Buildings/Occupancies

• 9.2.3.1 Isolated Cooking Operations

- Formerly addressed by the modification process
 - Permits AHJ to omit grease removal devices, ducts, hood, fixed fire extinguishing system form cooking operations
 - Small buildings >30 ft. from grandstands and other public buildings.
 - employees only
 - Safety controls
 - PFE
 - Staff training
 - Fuel use and storage
 - Shutoff(s)



Part IV -- Existing Buildings/Occupancies

- Chapter 10 – Interior Finish, Contents, Furnishings
 - Committee active - referencing updated tests and testing standards.
 - More realistic
 - GIN 97-06
 - Burden of proof is on the AHJ

Part IV -- Existing Buildings/Occupancies

- Chapter 11 Special Structures and High Rise Buildings
 - Deleted 11.10 Temporary Membrane Structures
 - Deleted 11.11 Tents
 - Fall under Part III
 - Deleted 11.9.1.6.3 Field Tests for permanent membrane structures.

Part IV -- Existing Buildings/Occupancies

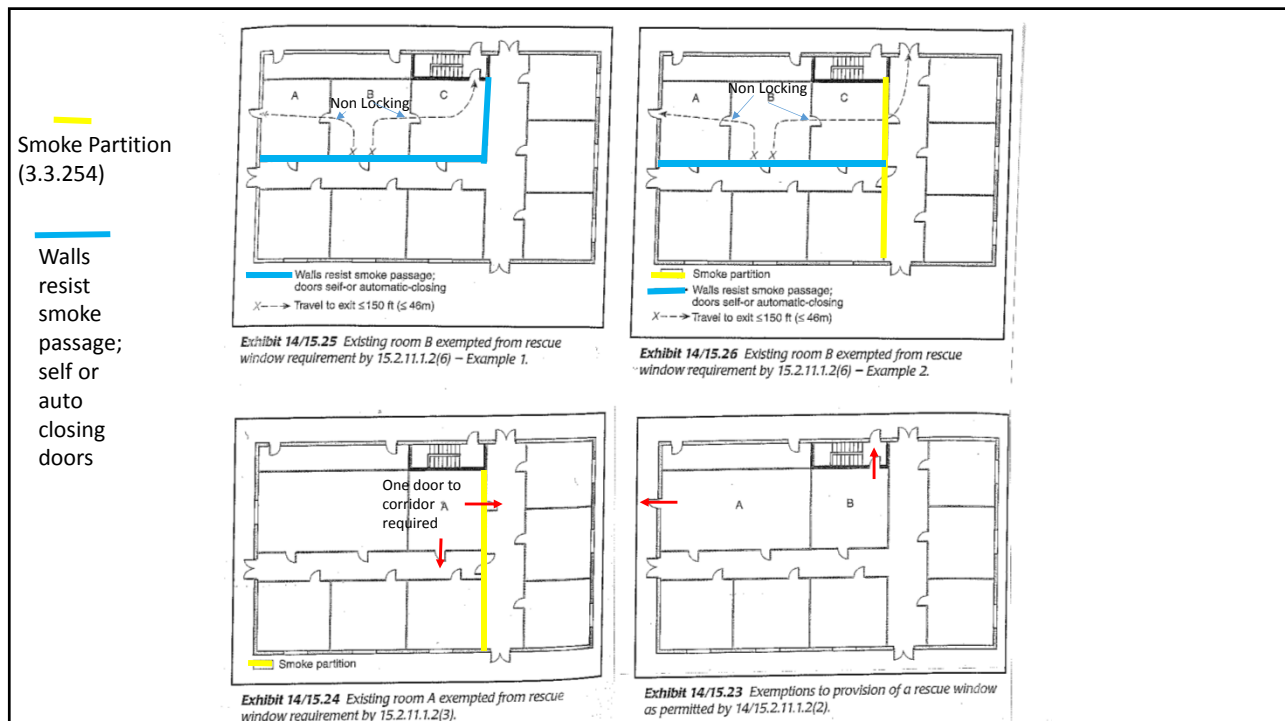
- Chapter 13 Assembly Occupancies
 - 13.2.5.4.1 Festival seating lowered to 250 persons from 1000, if over 250 need life safety evaluation.
 - 13.2.5.6.5 expanded tolerances on aisle stair
 - 13.2.10.3 Evacuation diagrams we have CGS 29-381 (announcement)
 - 13.4.2.4 new table for outdoor smoke protected seating

Part IV -- Existing Buildings/Occupancies

- 15.3.4.4 -- CO detection in Existing Educational
 - CGS 29-292 (3) --- PA 11-248 – Mandated by Statute
 - CO detection equipment meet UL 2075 (gas detectors/sensors)
 - CO warning equipment UL 2034 (single/multiple alarms)
 - On Ceiling or manufacturers instructions
 - In rooms containing - Permanently installed fuel burning equipment
 - Remote as possible from equipment
 - Exception: rooms with cooking appliances, labs, maintenance spaces
 - Signage on door(s)
 - Battery or 120 vac plug in w/ battery backup
 - If connected to building FA – Supervisory signal (NO fire alarm)
 - NFPA 720 **How** to install & maintain

Part IV -- Existing Buildings/Occupancies

- 15.2.11.1.2 Windows for rescue – exemption from
 - Added door directly to an exit as well as the existing door to the outside.
 - Added doors (2) to smoke separated corridors/compartments
 - Travel through intervening rooms that may also utilize other provisions of this section not to have a window. Travel distance limitations.
- 15.3.6 Corridors
 - Clarified the requirement that walls separating lavatories (if open to the corridor) from adjacent rooms need to be smoke partitions (3.3.254 –limits transfer of smoke)



Part IV -- Existing Buildings/Occupancies

- Lockups

- Dfn. 3.3.164

- Incidental use area in other than D&C where occupants are restrained and such occupants are mostly incapable of self-preservation because of security measures not under their control.

- XX-2.11.2

- Other than approved existing
 - Comply with 23.4.5 (Det. & Corr.)
 - General and Alternate provisions



Part IV -- Existing Buildings/Occupancies

- Chapter 17 Day Care Occupancies

- 17.2.2.4 expanded the requirement for the opening of door latches from closets to closets, storage areas, kitchens; so clients can open the door from inside the area.
 - 17.2.11.1.2 Windows for rescue – Same as educational
 - 17.3.2.6 Added provisions for alcohol based hand sanitizers similar to Health Care
 - 17.6.1.6 Day Care Homes – Revised means of escape requirements
 - At least one good way out (escape) - door to outside, outside stair ½ hr. protected inside stair.

Part IV -- Existing Buildings/Occupancies



- Chapter 19 Existing Health Care (JCAHO on 2012 ed)
 - Adopted TIA 12-2 as part of the code
 - Effects 19.3.2.5.3 Cooking facilities (floor type operations)
 - Effects 19.3.4.x.x several sections addressing fire alarms
 - Initiation
 - Occupant notification
 - Emergency forces notification
 - Relaxed requirements for delayed egress locks 19.2.2.2.4
 - Current code is 1 lock in egress path, proposed is unlimited
 - Reminder as in the past OSFM retains modification right on locking doors (09 amd)
 - Based on clinical needs of patients see 19.1.1.1.1 and 19.1.1.1.7



Part IV -- Existing Buildings/Occupancies

- 19.2.3.4(4) aisles, corridors, ramps – reduce clearance
 - Recognized railings along path that are attached to walls
 - Recognized wheeled equipment (carts, computer carts, etc.)
 - Fixed furniture along paths
 - Criteria



Part IV -- Existing Buildings/Occupancies

- 19.2.5.7 Cleaned up suites -
- 19.3.2.5.5 cleaned up alcohol hand rub stations
- 19.3.8 deleted requirement for window/door to the outside from a patient sleeping room
- 19.3.5.10 Sprinklers in closets
 - Omit if meets certain criteria
 - In patient sleeping room
 - 6 sq. ft. max.
 - Distance from sprinkler in room to back of closet conforms to NFPA 13
- 19.5.2.3 Permits direct vent gas fire places in smoke compartmentms containing patient sleeping areas.

Part IV -- Existing Buildings/Occupancies

- Chapter 21 Ambulatory HC
 - 21.2.2.6 Doors in horizontal exits not required to swing in direction of exit travel
 - 21.3.2.6 Alcohol based hand rub same changes as made to HC
 - 21.3.7.6 Smoke & fire dampers omitted from existing duct work
 - Old – Building fully sprinklered
 - Now – Smoke compartment sprinklered.
 - 21.3.7.10 Removed requirement for vision panels in cross corridor smoke barrier doors.

Part IV -- Existing Buildings/Occupancies

- Chapter 23 Detention & Correctional
 - CT modified definition 3.3.188.5 to four or more as is in the current code and coordinated to Part III.
- Provisions for lockup in 23.4.5
 - Lockup definition 3.3.164
 - Incidental use area
 - Other than Detention & Correctional
 - < 24 hrs.
 - Occupants restrained, incapable of self preservation
 - General and Alternate provisions
 - FD notified of buildings with lockups

Part IV -- Existing Buildings/Occupancies

- Chapter 24 Dwelling Units (CT amd title)
 - Dwelling unit definition 3.3.66
- Secondary means of escape window
 - 20" wide X 22' High Match new construction
- 24.2.2.3.4 Bulkheads
 - Can serve as a secondary means of escape
 - Living areas (3.3.21.5) and sleeping rooms – finished basements
- Reminders for:
 - Smoke detection Statutes 29-292 & 29-453
 - CO alarms Statutes 29-292 & 29-453



Part IV -- Existing Buildings/Occupancies

- Chapter 31 Apartments and Dormitories
 - 31.3.5.11 High rise protected by AS
 - Dfn. of High-Rise 3.3 36.7
 - A building where the floor of the highest occupiable story is greater than 75 feet above the lowest level of FD vehicle access.
 - Exterior exit access 7.5.3
 - Engineered Life Safety System Approved by SFM
 - Prepared by a PE w/ experience in life safety system design
 - Partial AS
 - Smoke detection system with alarm (occupant notification)
 - Smoke control
 - Compartmentation
 - Other approved systems or both

Part IV -- Existing Buildings/Occupancies

- Staged Implementation (Amd 31.3.5.11.1 & .2)
 - Similar to that used when sprinkler requirement for Nursing Homes came about.
 - Plan to LFM with specific timetable by October 1, 2017
 - One year from citation
 - System installed July 1, 2021.

Part IV -- Existing Buildings/Occupancies

- Chapter 33 Residential Board & Care – Small (.2) & Large (.3)
 - 33.2.3.5.7 Expanded Sprinkler Coverage Areas
 - **Where using 13D/13R systems**
 - Sprinklers in attics
 - Attics NOT used for living purposes, Storage, No fuel fired equipment
 - Heat Detection to activate building fire alarm
 - Sprinklers by NFPA 13
 - Attic construction limited to non-combustible or limited combustible materials. (i.e. steel, gypsum)
 - Attic construction limited to fire retardant wood.
 - Maintenance provisions for 13D systems (33.3.2.5.8)
 - 13D NOT covered by NFPA 25

RB&C - 3 to 4 Client Change

- Remember Part III does not reference the classification 'Residential Board and Care'.
- A change of use would be NEW
 - 1 Family/IRC to I-2/R-4
 - Small group home alternative (DDS/OSFM)

Part IV -- Existing Buildings/Occupancies

- 33.3.1.2.2 Impractical has option to conform to Chap 19 – for Limited Care Facility
- 33.3.2.9 Expanded emergency lighting to cover Large Impractical
- 33.3.5.4 Same sprinkler requirements for attics an Small
- 33.3.3.7 Subdivision of Building Spaces
 - Some revision with regard to smoke barriers - Impractical

Part IV -- Existing Buildings/Occupancies

- Definitions
 - 3.3 36.2 Anchor Building (100% separate from mall)
 - ^3.3.166 Major Tenant (50% separate from and 50% through mall)
 - 3.3.36.9 Mall building – single building enclosing a number of tenants and occupancies where two or more have main entrances onto one or more malls. (Anchor buildings not part of mall buildings)
 - 3.3.167 Mall – roofed or covered area within a mall building that serves as access to two or more tenants and does not exceed three levels that are open to each other.

Part IV -- Existing Buildings/Occupancies

- 37.2.5.6 In Class A mercantile clarified the 60" aisle leading to an exit is clear width; previous code specified width.
- 37.2.5.7 Changed from $\frac{2}{3}$ to $\frac{1}{2}$, in other than bulk merchandising, the egress width for mercantile occupancies where the only means of customer entrance is through one wall; the exiting is through that wall
- 37.2.7.2 removed limitation on travel distance (50 ft.) where 50% of the exits is permitted to pass through the LED in accordance with 7.7.2.
- Relaxed interior finish requirements to permit Class C finish where previously limited to small rooms and 'Class C mercantile'
- 37.4.5.3 Storage arrangement and protection of hazardous commodities in accordance with FPC.

Part IV -- Existing Buildings/Occupancies

- Chapter 39 Existing Business
 - 39.2.4.7 New exception for 3 story single tenant
 - 15 persons/floor (1500 ft. sq.), AS & SD with occupant notification, TD \leq 100ft.
 - 39.2.4.8 Kept CT Amd for the 2 story single tenant

Part IV -- Existing Buildings/Occupancies

- Chapter 40 Industrial
 - Code no longer exempts manufacturing
 - Classifications
 - General Industrial
 - Special Purpose Industrial
 - High-Hazard Industrial

- Date set November 18, 2016
- 450 Columbus Boulevard, 13th Floor Hartford – Next to I-91
- Phone numbers supposed to stay the same

