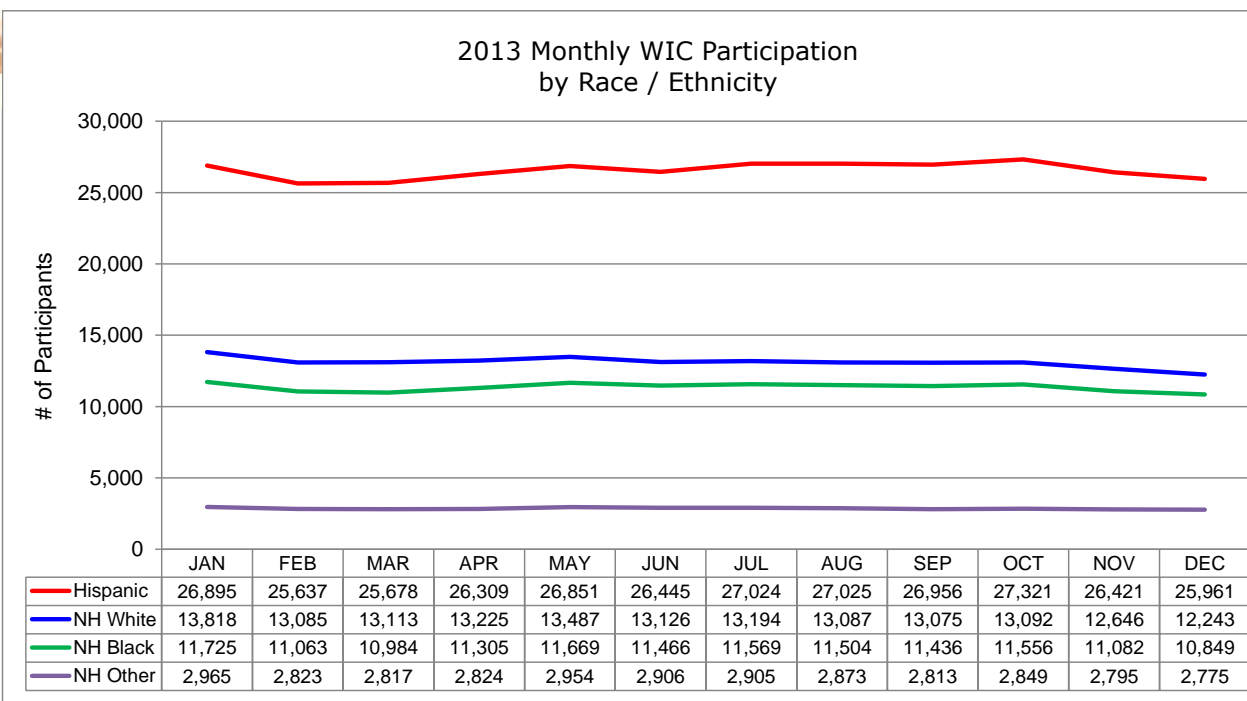


2013 Monthly WIC Participation
by Race / Ethnicity (Summary Categories) ^{a, b}

STATEWIDE TOTALS	QUARTER 1			QUARTER 2			QUARTER 3			QUARTER 4			MONTHLY AVERAGE	%
	JAN	FEB	MAR	APR	MAY	JUN	JUL	AUG	SEP	OCT	NOV	DEC		
Hispanic	26,895	25,637	25,678	26,309	26,851	26,445	27,024	27,025	26,956	27,321	26,421	25,961	26,544	49.3%
Non-Hispanic White	13,818	13,085	13,113	13,225	13,487	13,126	13,194	13,087	13,075	13,092	12,646	12,243	13,099	24.3%
Non-Hispanic Black	11,725	11,063	10,984	11,305	11,669	11,466	11,569	11,504	11,436	11,556	11,082	10,849	11,351	21.1%
Non-Hispanic, Other Race	2,965	2,823	2,817	2,824	2,954	2,906	2,905	2,873	2,813	2,849	2,795	2,775	2,858	5.3%
GRAND TOTAL	55,403	52,608	52,592	53,663	54,961	53,943	54,692	54,489	54,280	54,818	52,944	51,828	53,852	100.0%



^a Data source: Statewide WIC Information System (SWIS), Race / Ethnicity Report - WICP3002 (totals may not tie out due to rounding).

^b Excludes participants of unknown race and/or ethnicity.