



CONNECTICUT DEPARTMENT OF PUBLIC HEALTH
STATE WIC PROGRAM



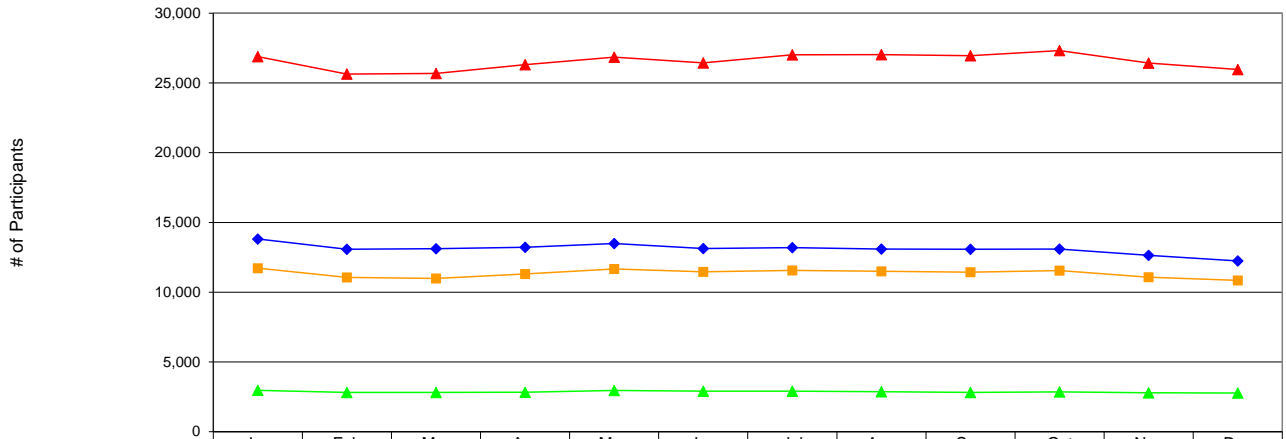
CONNECTICUT WIC PROGRAM - STATEWIDE TOTALS
Monthly WIC Participation by Race / Ethnicity
& Participant Category, 2013 ^a

MONTHLY PARTICIPATION BY RACE / ETHNICITY & CATEGORY	QUARTER 1			QUARTER 2			QUARTER 3			QUARTER 4			AVERAGE	%
	Jan	Feb	Mar	Apr	May	Jun	Jul	Aug	Sep	Oct	Nov	Dec		
HISPANIC	26,895	25,637	25,678	26,309	26,851	26,445	27,024	27,025	26,956	27,321	26,421	25,961	26,544	49.3%
Women	5,210	4,966	4,918	5,085	5,210	5,096	5,244	5,239	5,195	5,330	5,188	5,099	5,148	19.4%
- Pregnant	2,683	2,581	2,592	2,685	2,784	2,755	2,826	2,887	2,831	2,850	2,684	2,597	2,730	53.0%
- Breastfeeding (BF)	1,227	1,175	1,121	1,154	1,154	1,155	1,215	1,171	1,138	1,223	1,279	1,266	1,190	23.1%
- Fully breastfeeding	382	373	360	371	364	362	363	343	326	336	332	318	353	29.6%
- Partially breastfeeding	845	802	761	783	790	793	852	828	812	887	947	948	837	70.4%
- Postpartum (not BF)	1,300	1,210	1,205	1,246	1,272	1,186	1,203	1,181	1,226	1,257	1,225	1,236	1,229	23.9%
Infants	6,462	6,249	6,247	6,330	6,363	6,238	6,428	6,378	6,316	6,512	6,357	6,340	6,352	23.9%
- Fully breastfed	369	353	368	369	388	370	373	334	317	330	321	318	351	5.5%
- Partially breastfed	1,608	1,503	1,453	1,486	1,475	1,499	1,556	1,604	1,608	1,740	1,741	1,743	1,585	24.9%
- Formula fed only	4,485	4,393	4,426	4,475	4,500	4,369	4,499	4,440	4,391	4,442	4,295	4,279	4,416	69.5%
Children	15,223	14,422	14,513	14,894	15,278	15,111	15,352	15,408	15,445	15,479	14,876	14,522	15,044	56.7%
NON-HISPANIC WHITE	13,818	13,085	13,113	13,225	13,487	13,126	13,194	13,087	13,075	13,092	12,646	12,243	13,099	24.3%
Women	3,492	3,283	3,284	3,333	3,398	3,263	3,288	3,284	3,247	3,295	3,140	2,992	3,275	25.0%
- Pregnant	1,637	1,559	1,527	1,594	1,629	1,549	1,535	1,533	1,498	1,467	1,349	1,302	1,515	46.3%
- Breastfeeding (BF)	779	769	806	792	813	783	814	806	811	833	825	798	802	24.5%
- Fully breastfeeding	459	450	469	473	494	484	500	489	483	491	465	430	474	59.1%
- Partially breastfeeding	320	319	337	319	319	299	314	317	328	342	360	368	329	40.9%
- Postpartum (not BF)	1,076	955	951	947	956	931	939	945	938	995	966	892	958	29.2%
Infants	3,737	3,542	3,569	3,552	3,591	3,517	3,562	3,445	3,398	3,424	3,328	3,266	3,494	26.7%
- Fully breastfed	419	414	443	441	447	436	442	429	404	406	381	357	418	12.0%
- Partially breastfed	533	505	524	511	492	497	521	527	568	582	560	557	531	15.2%
- Formula fed only	2,785	2,623	2,602	2,600	2,652	2,584	2,599	2,489	2,426	2,436	2,387	2,352	2,545	72.8%
Children	6,589	6,260	6,260	6,340	6,498	6,346	6,344	6,358	6,430	6,373	6,178	5,985	6,330	48.3%
NON-HISPANIC BLACK	11,725	11,063	10,984	11,305	11,669	11,466	11,569	11,504	11,436	11,556	11,082	10,849	11,351	21.1%
Women	2,519	2,373	2,327	2,417	2,494	2,468	2,474	2,481	2,410	2,467	2,382	2,305	2,426	21.4%
- Pregnant	1,280	1,196	1,169	1,226	1,271	1,253	1,292	1,340	1,254	1,281	1,208	1,134	1,242	51.2%
- Breastfeeding (BF)	561	546	571	593	591	585	565	544	553	580	570	573	569	23.5%
- Fully breastfeeding	181	171	177	180	183	184	169	175	166	165	174	172	175	30.7%
- Partially breastfeeding	380	375	394	413	408	401	396	369	387	415	396	401	395	69.3%
- Postpartum (not BF)	678	631	587	598	632	630	617	597	603	606	604	598	615	25.3%
Infants	2,997	2,890	2,904	2,983	3,054	2,973	3,008	2,931	2,885	2,922	2,881	2,870	2,942	25.9%
- Fully breastfed	137	133	144	152	153	151	157	149	130	133	147	149	145	4.9%
- Partially breastfed	706	666	675	699	729	690	698	690	709	736	723	731	704	23.9%
- Formula fed only	2,154	2,091	2,085	2,132	2,172	2,132	2,153	2,092	2,046	2,053	2,011	1,990	2,093	71.1%
Children	6,209	5,800	5,753	5,905	6,121	6,025	6,087	6,092	6,141	6,167	5,819	5,674	5,983	52.7%
NON-HISPANIC, OTHER RACE(S)	2,965	2,823	2,817	2,824	2,954	2,906	2,905	2,873	2,813	2,849	2,795	2,775	2,858	5.3%
Women	565	537	541	542	564	560	581	566	524	529	525	534	547	19.1%
- Pregnant	242	226	230	241	243	221	255	260	236	249	235	241	240	43.8%
- Breastfeeding (BF)	209	201	198	184	204	211	210	189	175	163	169	171	190	34.8%
- Fully breastfeeding	78	77	78	77	81	84	88	78	70	70	75	67	77	40.4%
- Partially breastfeeding	131	124	120	107	123	127	122	111	105	93	94	104	113	59.6%
- Postpartum (not BF)	114	110	113	117	117	128	116	117	113	117	121	122	117	21.4%
Infants	869	820	814	798	816	782	770	760	736	730	708	703	776	27.1%
- Fully breastfed	94	84	78	77	87	86	80	82	75	74	71	64	79	10.2%
- Partially breastfed	223	207	200	204	208	204	200	184	179	184	185	199	198	25.5%
- Formula fed only	552	529	536	517	521	492	490	494	482	472	452	440	498	64.2%
Children	1,531	1,466	1,462	1,484	1,574	1,564	1,554	1,547	1,553	1,590	1,562	1,538	1,535	53.7%
TOTAL PARTICIPANTS	55,403	52,608	52,592	53,663	54,961	53,943	54,692	54,489	54,280	54,818	52,944	51,828	53,852	100.0%
Women	11,786	11,159	11,070	11,377	11,666	11,387	11,587	11,570	11,376	11,621	11,235	10,930	11,397	21.2%
- Pregnant	5,842	5,562	5,518	5,746	5,927	5,778	5,908	6,020	5,819	5,847	5,476	5,274	5,726	50.2%
- Breastfeeding (BF)	2,776	2,691	2,696	2,723	2,762	2,734	2,804	2,710	2,677	2,799	2,843	2,808	2,752	24.1%
- Fully breastfeeding	1,100	1,071	1,084	1,101	1,122	1,114	1,120	1,085	1,045	1,062	1,046	987	1,078	39.2%
- Partially breastfeeding	1,676	1,620	1,612	1,622	1,640	1,620	1,684	1,625	1,632	1,737	1,797	1,821	1,674	60.8%
- Postpartum (not BF)	3,168	2,906	2,856	2,908	2,977	2,875	2,875	2,840	2,880	2,975	2,916	2,848	2,919	25.6%
Infants	14,065	13,501	13,534	13,663	13,824	13,510	13,768	13,514	13,335	13,588	13,274	13,179	13,563	25.2%
- Fully breastfed	1,019	984	1,033	1,039	1,075	1,043	1,052	994	926	943	920	888	993	7.3%
- Partially breastfed	3,070	2,881	2,852	2,900	2,904	2,890	2,975	3,005	3,064	3,242	3,209	3,230	3,019	22.3%
- Formula fed only	9,976	9,636	9,649	9,724	9,845	9,577	9,741	9,515	9,345	9,403	9,145	9,061	9,551	70.4%
Children	29,552	27,948	27,988	28,623	29,471	29,046	29,337	29,405	29,569	29,609	28,435	27,719	28,892	53.7%
UNKNOWN RACE OR ETHNICITY	0	0	0	2	0	4	0	0	0	0	1	0	1	
GRAND TOTAL	55,403	52,608	52,592	53,665	54,961	53,947	54,692	54,489	54,280	54,818	52,945	51,828	53,852	

Cont... →

^a Data source: Statewide WIC Information System (SWIS), Racial / Ethnic Participation (WICP3002).

Connecticut WIC
Monthly Participation by Race / Ethnicity
2013



	Jan	Feb	Mar	Apr	May	Jun	Jul	Aug	Sep	Oct	Nov	Dec
▲ HISPANIC	26,895	25,637	25,678	26,309	26,851	26,445	27,024	27,025	26,956	27,321	26,421	25,961
◆ NON-HISPANIC WHITE	13,818	13,085	13,113	13,225	13,487	13,126	13,194	13,087	13,075	13,092	12,646	12,243
■ NON-HISPANIC BLACK	11,725	11,063	10,984	11,305	11,669	11,466	11,569	11,504	11,436	11,556	11,082	10,849
▲ NON-HISPANIC, OTHER RACE(S)	2,965	2,823	2,817	2,824	2,954	2,906	2,905	2,873	2,813	2,849	2,795	2,775

^a Data source: Statewide WIC Information System (SWIS), Racial / Ethnic Participation (WICP3002).