

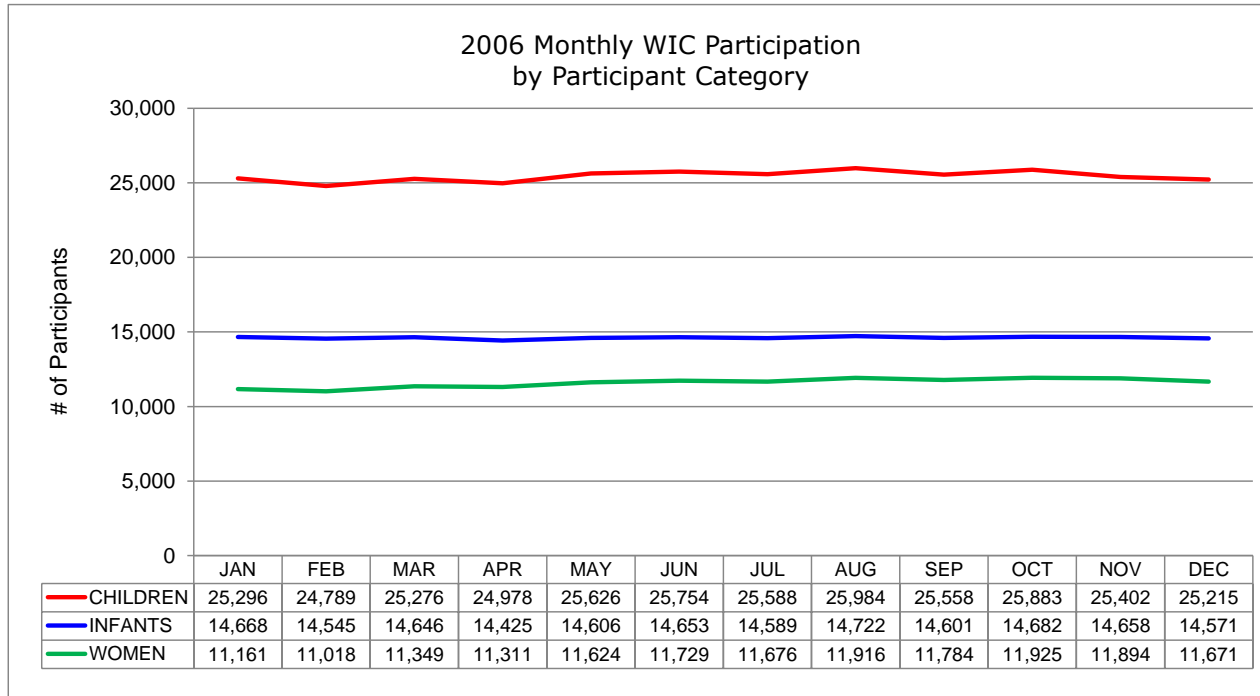
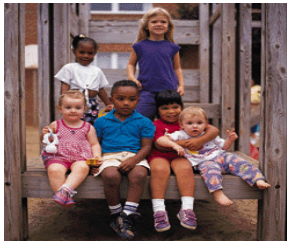


CONNECTICUT DEPARTMENT OF PUBLIC HEALTH  
STATE WIC PROGRAM



2006 Monthly WIC Participation  
by Participant Category <sup>a</sup>

| STATEWIDE TOTALS    | QUARTER 1 |        |        | QUARTER 2 |        |        | QUARTER 3 |        |        | QUARTER 4 |        |        | MONTHLY AVERAGE | %      |
|---------------------|-----------|--------|--------|-----------|--------|--------|-----------|--------|--------|-----------|--------|--------|-----------------|--------|
|                     | JAN       | FEB    | MAR    | APR       | MAY    | JUN    | JUL       | AUG    | SEP    | OCT       | NOV    | DEC    |                 |        |
| <b>WOMEN</b>        | 11,161    | 11,018 | 11,349 | 11,311    | 11,624 | 11,729 | 11,676    | 11,916 | 11,784 | 11,925    | 11,894 | 11,671 | 11,588          | 22.4%  |
| - Pregnant          | 5,900     | 5,816  | 6,046  | 6,010     | 6,256  | 6,405  | 6,417     | 6,561  | 6,462  | 6,427     | 6,373  | 6,182  | 6,238           | 53.8%  |
| - Breastfeeding     | 2,305     | 2,315  | 2,375  | 2,344     | 2,377  | 2,356  | 2,345     | 2,375  | 2,347  | 2,443     | 2,490  | 2,458  | 2,378           | 20.5%  |
| - Postpartum        | 2,956     | 2,887  | 2,928  | 2,957     | 2,991  | 2,968  | 2,914     | 2,980  | 2,975  | 3,055     | 3,031  | 3,031  | 2,973           | 25.7%  |
| <b>INFANTS</b>      | 14,668    | 14,545 | 14,646 | 14,425    | 14,606 | 14,653 | 14,589    | 14,722 | 14,601 | 14,682    | 14,658 | 14,571 | 14,614          | 28.3%  |
| <b>CHILDREN</b>     | 25,296    | 24,789 | 25,276 | 24,978    | 25,626 | 25,754 | 25,588    | 25,984 | 25,558 | 25,883    | 25,402 | 25,215 | 25,446          | 49.3%  |
| <b>GRAND TOTALS</b> | 51,125    | 50,352 | 51,271 | 50,714    | 51,856 | 52,136 | 51,853    | 52,622 | 51,943 | 52,490    | 51,954 | 51,457 | 51,648          | 100.0% |



<sup>a</sup> Data source: Statewide WIC Information System (SWIS), Participation Report - WICP3001 / 301T.