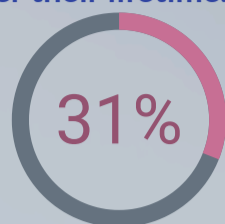


Breast Cancer in Connecticut



1 in 8 women in the U.S. will develop invasive breast cancer over their lifetime.



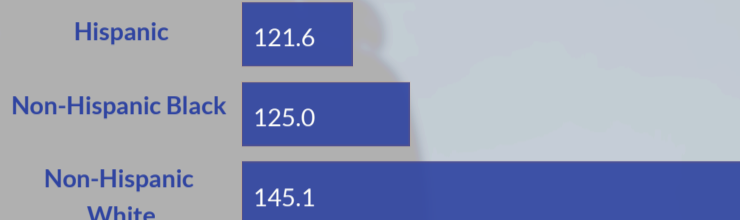
Breast cancer is the most common cancer in CT women, accounting for 31% of all new cancer cases

In 2017,
3,236

new breast cancer cases were diagnosed among Connecticut women.

Connecticut has one of the highest incidence rates* in the country, with 141 cases per 100,000 women - ranking 2nd compared to other states.

New Breast Cancer Cases per 100,000 Women*, 2013-2017



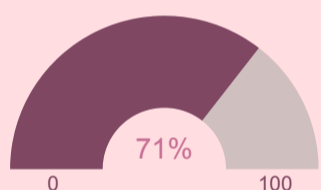
* Rates are age-adjusted to account for differences in age distribution in the underlying populations.

The majority of breast cancers occur in women. Tumors typically develop in the ducts and less frequently in the lobes.

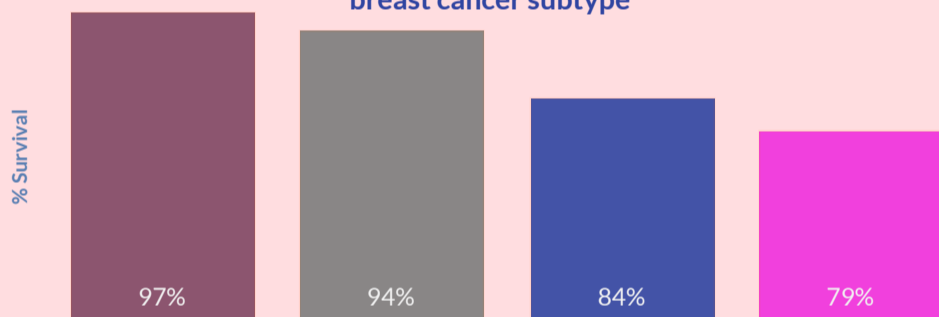
Breast cancers are grouped into 4 molecular subtypes: Luminal A, Luminal B, HER2-enriched, and triple-negative.

- Luminal A
- Luminal B
- HER2 Enriched
- Triple Negative

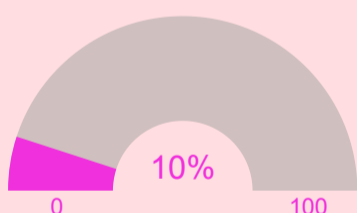
Luminal A breast cancers have the best prognosis. They accounted for 71% of all new breast cancer diagnoses in CT.



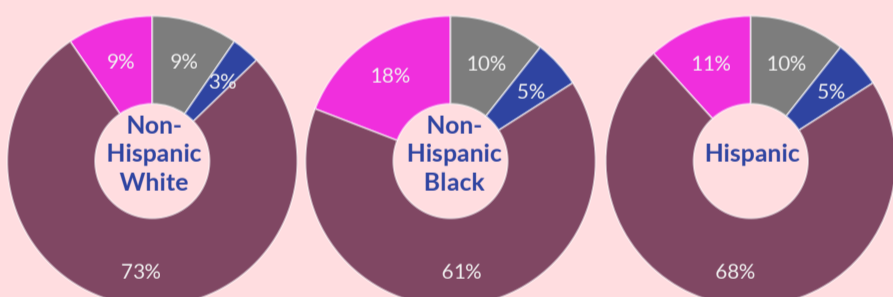
Five-year relative age-standardized survival by breast cancer subtype



Triple Negative breast cancers have a poorer prognosis. They only accounted for 9% of new breast cancers.

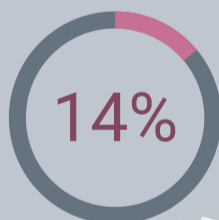


The proportion of breast cancer subtypes by race/ethnicity.



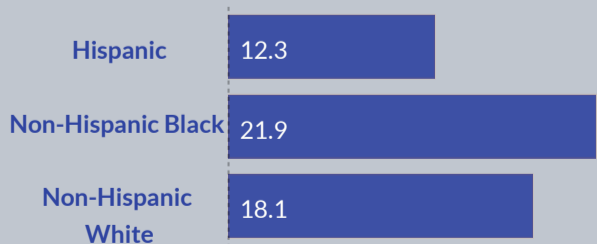
In 2017,
466 Connecticut women died from breast cancer.

Breast cancer is the 2nd leading cause of cancer death in CT women, accounting for 14% of all cancer deaths.



Non-Hispanic black women have the highest mortality rates* in Connecticut, despite their lower incidence rates.

Breast Cancer Deaths per 100,000 Women*, 2013-2017



Connecticut has one of the lowest mortality rates* in the country, with 18 deaths per 100,000 women - ranking 42nd compared to other states.

From 1990-2017, breast cancer mortality rates* among CT women decreased significantly at an average annual rate of

3%

* Rates are age-adjusted to account for differences in age distribution in the underlying populations.

CONTACT US

Connecticut Tumor Registry
410 Capitol Avenue, MS# 13TMR
P.O. Box 340308
Hartford, CT 06134-0308

Phone: (860) 509-7163
Fax: (860) 509-7161
Website: <http://www.ct.gov/dph/TumorRegistry>

