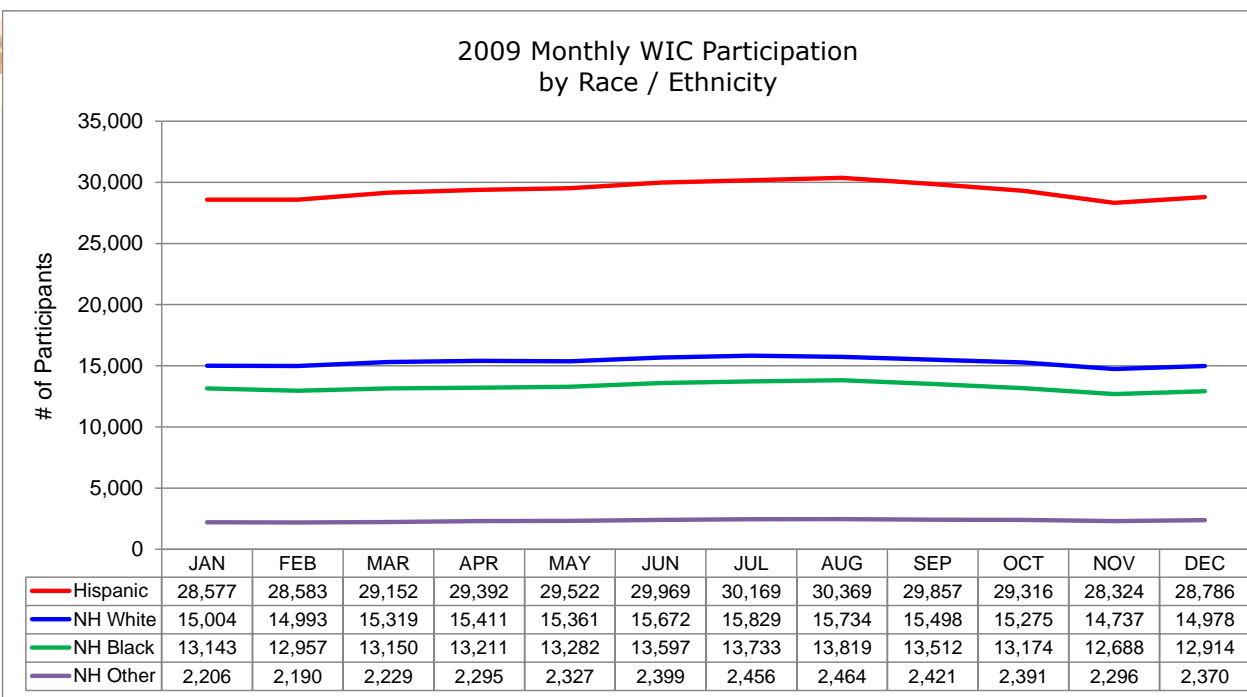


2009 Monthly WIC Participation
by Race / Ethnicity (Summary Categories) ^{a, b}

STATEWIDE TOTALS	QUARTER 1			QUARTER 2			QUARTER 3			QUARTER 4			MONTHLY AVERAGE	%
	JAN	FEB	MAR	APR	MAY	JUN	JUL	AUG	SEP	OCT	NOV	DEC		
Hispanic	28,577	28,583	29,152	29,392	29,522	29,969	30,169	30,369	29,857	29,316	28,324	28,786	29,335	48.7%
Non-Hispanic White	15,004	14,993	15,319	15,411	15,361	15,672	15,829	15,734	15,498	15,275	14,737	14,978	15,318	25.4%
Non-Hispanic Black	13,143	12,957	13,150	13,211	13,282	13,597	13,733	13,819	13,512	13,174	12,688	12,914	13,265	22.0%
Non-Hispanic, Other Race	2,206	2,190	2,229	2,295	2,327	2,399	2,456	2,464	2,421	2,391	2,296	2,370	2,337	3.9%
GRAND TOTAL	58,930	58,723	59,850	60,309	60,492	61,637	62,187	62,386	61,288	60,156	58,045	59,048	60,254	100.0%



^a Data source: Statewide WIC Information System (SWIS), Race / Ethnicity Report - WICP3002 (totals may not tie out due to rounding).

^b Excludes participants of unknown race and/or ethnicity.