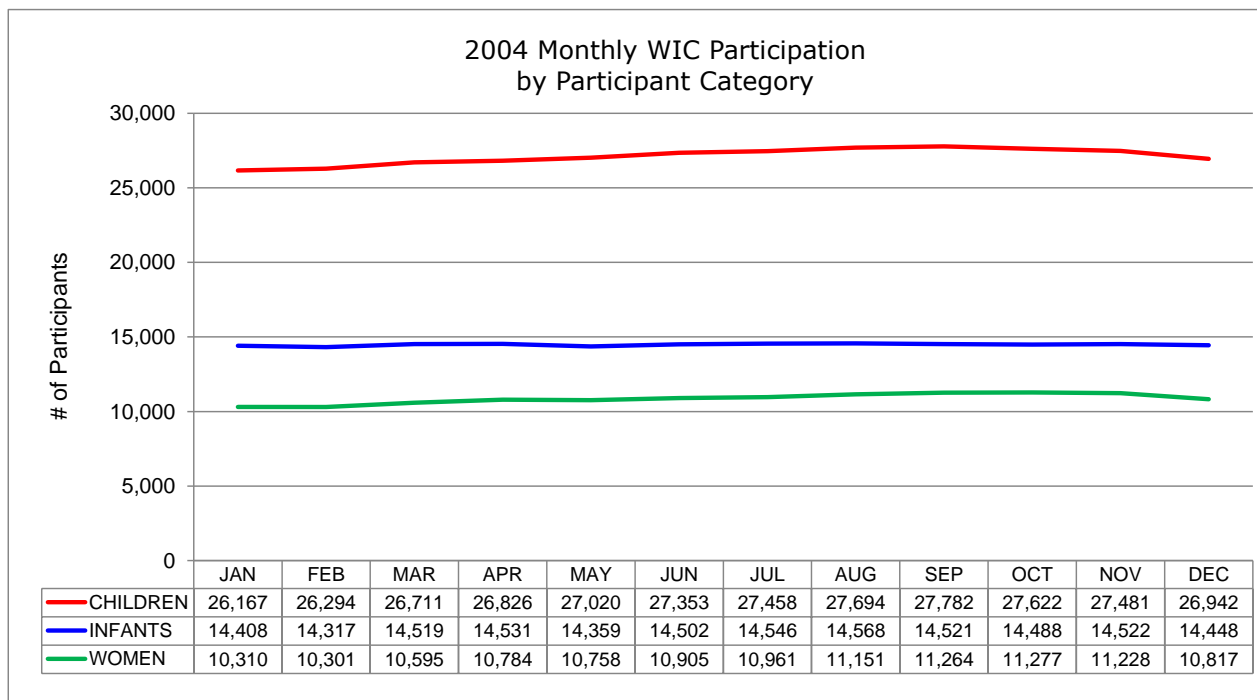
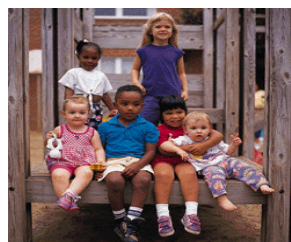


2004 Monthly WIC Participation
by Participant Category ^a

STATEWIDE TOTALS	QUARTER 1			QUARTER 2			QUARTER 3			QUARTER 4			MONTHLY AVERAGE	%
	JAN	FEB	MAR	APR	MAY	JUN	JUL	AUG	SEP	OCT	NOV	DEC		
WOMEN	10,310	10,301	10,595	10,784	10,758	10,905	10,961	11,151	11,264	11,277	11,228	10,817	10,863	20.7%
- Pregnant	5,404	5,407	5,673	5,866	5,898	5,970	6,014	6,106	6,131	6,039	5,928	5,670	5,842	53.8%
- Breastfeeding	1,983	1,993	2,046	2,031	2,014	2,049	2,061	2,103	2,152	2,178	2,207	2,174	2,083	19.2%
- Postpartum	2,923	2,901	2,876	2,887	2,846	2,886	2,886	2,942	2,981	3,060	3,093	2,973	2,938	27.0%
INFANTS	14,408	14,317	14,519	14,531	14,359	14,502	14,546	14,568	14,521	14,488	14,522	14,448	14,477	27.6%
CHILDREN	26,167	26,294	26,711	26,826	27,020	27,353	27,458	27,694	27,782	27,622	27,481	26,942	27,113	51.7%
GRAND TOTALS	50,885	50,912	51,825	52,141	52,137	52,760	52,965	53,413	53,567	53,387	53,231	52,207	52,453	100.0%



^a Data source: Statewide WIC Information System (SWIS),
Participation Report - WICP3001 / 301T.