

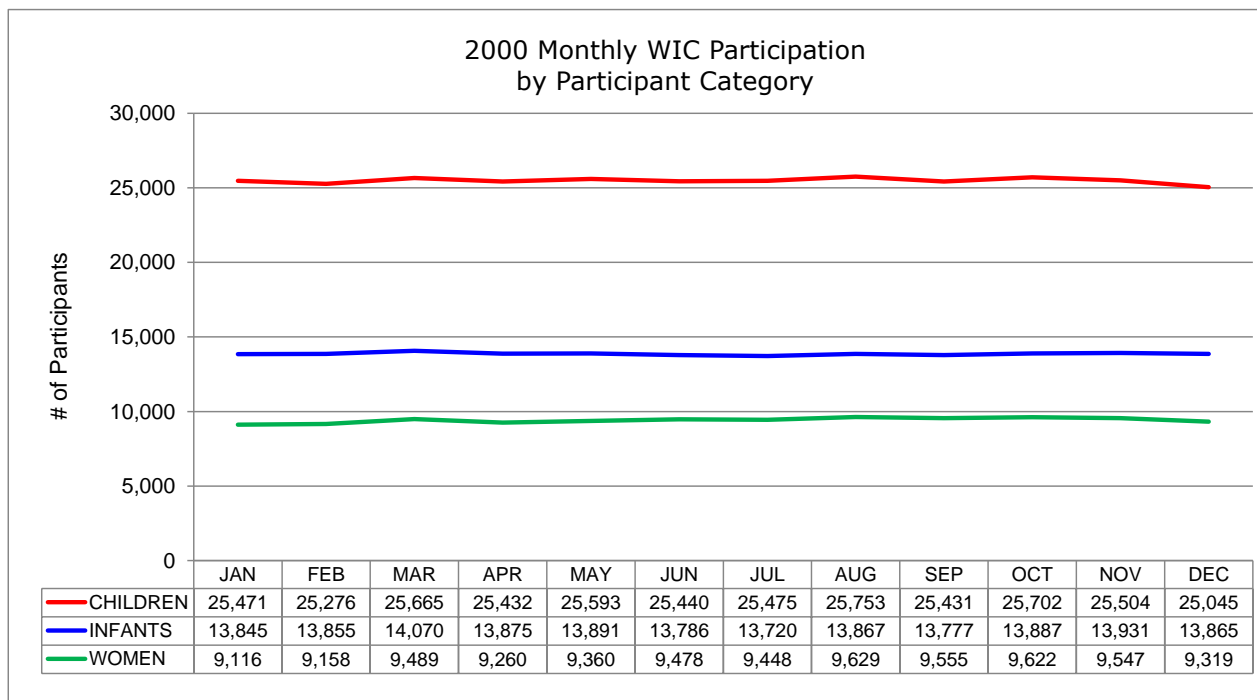
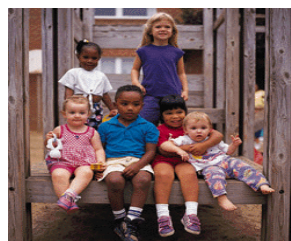


CONNECTICUT DEPARTMENT OF PUBLIC HEALTH
STATE WIC PROGRAM



2000 Monthly WIC Participation
by Participant Category ^a

STATEWIDE TOTALS	QUARTER 1			QUARTER 2			QUARTER 3			QUARTER 4			MONTHLY AVERAGE	%
	JAN	FEB	MAR	APR	MAY	JUN	JUL	AUG	SEP	OCT	NOV	DEC		
WOMEN	9,116	9,158	9,489	9,260	9,360	9,478	9,448	9,629	9,555	9,622	9,547	9,319	9,415	19.3%
- Pregnant	5,012	5,082	5,317	5,161	5,244	5,293	5,299	5,439	5,388	5,399	5,288	5,111	5,253	55.8%
- Breastfeeding	1,410	1,423	1,416	1,460	1,435	1,486	1,489	1,505	1,522	1,588	1,603	1,578	1,493	15.9%
- Postpartum	2,694	2,653	2,756	2,639	2,681	2,699	2,660	2,685	2,645	2,635	2,656	2,630	2,669	28.4%
INFANTS	13,845	13,855	14,070	13,875	13,891	13,786	13,720	13,867	13,777	13,887	13,931	13,865	13,864	28.4%
CHILDREN	25,471	25,276	25,665	25,432	25,593	25,440	25,475	25,753	25,431	25,702	25,504	25,045	25,482	52.3%
GRAND TOTALS	48,432	48,289	49,224	48,567	48,844	48,704	48,643	49,249	48,763	49,211	48,982	48,229	48,761	100.0%



^a Data source: Statewide WIC Information System (SWIS), Participation Report - WICP3001 / 301T.