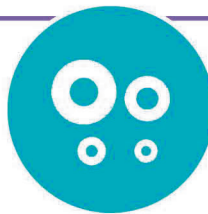


# The State of STDs in

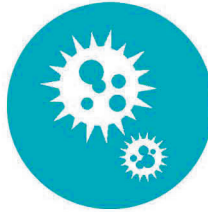
## CONNECTICUT



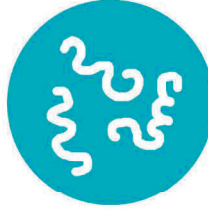
Sexually Transmitted Diseases  
Continue to Increase during  
2020



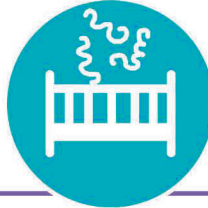
**12,716**  
CASES OF CHLAMYDIA  
3% decrease since 2015



**4,604**  
CASES OF GONORRHEA  
97% increase since 2015



**280**  
CASES OF SYPHILIS  
Primary and secondary cases  
101% increase since 2015



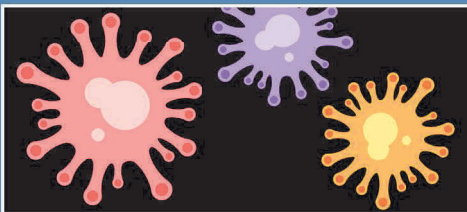
**2**  
CASES OF SYPHILIS  
AMONG NEWBORNS  
8 total cases since 2015

LEARN MORE AT: [www.cdc.gov/std/](http://www.cdc.gov/std/)

Anyone who has sex is  
at risk, but some groups  
are more affected

- Young people aged 15-24
- Men who have sex with Men
- Pregnant women

## LEFT UNTREATED, STDS CAN CAUSE:



INCREASED RISK OF GIVING  
OR GETTING HIV



LONG-TERM  
PELVIC/ABDOMINAL PAIN



INABILITY TO GET PREGNANT OR  
PREGNANCY COMPLICATIONS

## PREVENT THE SPREAD OF STDS WITH THREE SIMPLE STEPS:

**TALK**

**TEST**

**TREAT**

Discrepancies between CDC and state data are due to issues related to the transition to a new database during 2018.



Centers for Disease  
Control and Prevention  
National Center for HIV/AIDS,  
Viral Hepatitis, STD, and  
TB Prevention